

DRAFT DRAFT DRAFT DRAFT DRAFT DRAFT

The Commonwealth of Kentucky Emergency Operations Plan

2011

Kentucky Division of Emergency
Management



DRAFT DRAFT DRAFT DRAFT DRAFT DRAFT DRAFT

Contents

BASIC PLAN 7

 Executive Order 7

 Purpose 9

 Authorities..... 9

 Scope 10

 Plan Overview 11

 Situation Overview 15

 Figure 1: Kentucky Hazard Analysis Map 2000- 2011 17

 Figure 2: Kentucky County Presidential Declarations 2000 - 2011 18

 Hazards 19

 Hazardous Material 20

 Terrorism..... 21

 Animal Diseases 21

 Epidemiological Outbreaks 22

 Planning Assumptions 23

 Concept of Operations..... 25

 General..... 27

 Figure 3: Single Incident Command 29

 Figure 4: Transition to Unified Command..... 30

 Commonwealth Emergency Operations Center (CEOC) 31

 Figure 5: CEOC Layout..... 31

 Figure 6: CEOC Coordination Groups..... 32

 Commonwealth Intergovernmental Coordination Group (CICG) 32

 Commonwealth Joint Information Center (CJIC) 32

DRAFT DRAFT DRAFT DRAFT DRAFT DRAFT DRAFT

Commonwealth Systems and Communications Group (CSCG) 32

Commonwealth Geographic Information Group (CGIG) 33

Commonwealth Assessment and Analysis Group (CAAG) 33

Commonwealth Planning Group (CPG) 33

Commonwealth Resource Management Group (CRMG)..... 33

Regional Emergency Coordination Centers (RECC)..... 33

CEOC Emergency Support Functions (ESF) 33

National Guard Joint Operations Center (JOC)..... 34

Agency Operations Centers (AOC)..... 34

Unified Area Command (UAC)..... 34

CEOC Levels of Operations 35

Direction, Coordination and Control..... 37

 Figure 7: Direction, Coordination and Control 38

Information Collection, Analysis and Reporting 39

 Figure 8: Information Collection, Analysis & Reporting 40

Communications..... 41

 Figure 9: Communications 42

Assignment of Responsibilities..... 43

 Local Governments..... 43

 State Government..... 45

 Federal Government..... 46

 Businesses and Non-Governmental Agencies 47

Commonwealth Cabinets, Departments and Agencies 47

 Office of the Governor 48

 Department of Military Affairs (DMA) 50

 Kentucky National Guard (KYNG)..... 50

 Division of Emergency Management (KyEM)..... 51

DRAFT DRAFT DRAFT DRAFT DRAFT DRAFT DRAFT

Kentucky Community Crisis Response Board (KCCRB) 54

Kentucky Office of Homeland Security (KOHS) 54

Justice and Public Safety Cabinet 55

 Kentucky State Police (KSP)..... 55

 Office of the Medical Examiner 55

 Department of Corrections 56

Transportation Cabinet (KYTC) 56

 Department of Highways 56

Energy and Environment Cabinet (EEC) 57

 Department for Environmental Protection (DEP)..... 57

 Division of Environmental Program Support 57

 Division of Water (DOW)..... 57

 Division of Waste Management..... 58

 Division for Air Quality 58

 Department for Energy Development and Independence 58

 Department for Natural Resources..... 58

 Division of Forestry 58

 Division of Mine Reclamation and Enforcement..... 58

Public Service Commission (PSC)..... 58

Kentucky Fire Commission 59

Public Protection Cabinet 59

 Department of Housing, Building and Construction..... 59

Kentucky Labor Cabinet 59

Cabinet for Health and Family Services (CHFS) 60

 The Department for Community Based Services (DCBS)..... 60

Education and Workforce Development Cabinet 61

 Kentucky Center for School Safety 61

DRAFT DRAFT DRAFT DRAFT DRAFT DRAFT DRAFT

Department of Education (KDE)..... 62

 Kentucky Educational Television (KET) 62

Department of Library and Archives (DLA) 62

Kentucky Workforce Investment Board..... 62

Economic Development Cabinet 62

 Department of Fish and Wildlife Resources 63

 Department of Parks 63

 Department of Agriculture (KDA)..... 63

 Division of Food Distribution 63

 Office of State Veterinarian 63

 Division of Environmental Sciences 63

Personnel Cabinet 63

Finance and Administration Cabinet (F&AC) 64

 The Department for Facilities and Support Services 64

Volunteer Organizations Active in Disasters (VOAD) 64

The American Red Cross (ARC) 65

Plan Management..... 67

 Development..... 67

 Maintenance 67

 Document Control 68

 Record of Revisions and Changes..... 69

EMERGENCY SUPPORT FUNCTION ANNEXES 71

 ESF – 1 Transportation..... 71

 ESF – 2 Communications and Alerting 71

 ESF – 3 Public Works and Engineering 71

 ESF – 4 Fire Fighting..... 71

 ESF – 5 Emergency Management..... 71

DRAFT DRAFT DRAFT DRAFT DRAFT DRAFT DRAFT

ESF – 6 Mass Care, Emergency Assistance, Housing & Human Services 71

ESF – 7 Resource Support..... 71

ESF – 8 Public Health and Medical Services..... 71

ESF – 9 Search and Rescue 71

ESF – 10 Oil and Hazardous Materials Response 71

ESF – 11 Agriculture..... 71

ESF – 12 Energy 71

ESF – 13 Public Safety & Security..... 71

ESF – 14 Long-Term Community Recovery and Mitigation..... 71

ESF – 15 Public Information 71

SUPPORT PLANS 72

INCIDENT SPECIFIC PLANS 73

This Page Intentionally Left Blank

DRAFT DRAFT DRAFT DRAFT DRAFT DRAFT DRAFT
BASIC PLAN

Executive Order

EXECUTIVE ORDER

2011-xxx

July xx, 2011

Secretary of State

Frankfort

Kentucky

WHEREAS, KRS 39A.050(1) requires the Division of Emergency Management to coordinate for the Governor all matters pertaining to the comprehensive emergency management program of the Commonwealth of Kentucky, including certain emergency planning activities; and

WHEREAS, KRS 39A.050(2)(c) requires the Division of Emergency Management to periodically update and submit the Kentucky Emergency Operations Plan to the Governor for official approval and adoption through issuance of a signed Executive Order:

NOW, THEREFORE, I, Steve Beshear, Governor of the Commonwealth of Kentucky, by the virtue of the powers and authority vested in me by the Constitution and the laws of the Commonwealth of Kentucky, and in accordance with the provisions of KRS 39A to 39F, all appropriate federal laws, Presidential decision directives, and national plans for emergency management and homeland security promulgated by the President of the United States, the U.S. Department of Homeland Security, and the Federal Emergency Management Agency, or any other agency of the Federal Government having authority within the scope of KRS Chapter 39A to 39F, do hereby order and direct the following:

1. The Kentucky Emergency Operations Plan is hereby officially approved and adopted effective the date of this Executive Order, as shown herein.

DRAFT DRAFT DRAFT DRAFT DRAFT DRAFT DRAFT

2. The conveyance of official approval and adoption of the Kentucky Emergency Operations Plan through issuance of this Executive Order shall remain continuously in effect from the date of this Executive Order, or until superseded by a subsequent Executive Order promulgated in accordance with KRS 39A.050(2)(c).

3. The Division of Emergency Management shall file a copy of this signed Executive Order with the Legislative Research Commission in accordance with KRS 39A.050(2)(c) and shall place an electronic copy on the Division’s Internet web site for public reference.

STEVE BESHEAR
Governor

ELAINE WALKER
Secretary of State

Purpose

The Purpose of the Kentucky Emergency Operations Plan (KYEOP) is to define the general responsibilities of emergency response agencies, their partners, and the organizational structures required when activated to respond to emergency, disaster and or technological incidents impacting the Commonwealth of Kentucky and its citizens.

Authorities

The following authorities have been used in the development of the KYEOP

- Presidential Executive Order 11795
- Homeland Security Presidential Directive #3, #5, #8 and #9
- Governor of Kentucky Executive Order 96-1120
- Public Law 81-920, 88-352, 91-190, 91-606, 91-616, 91-646, 92-255, 92-385, 93-234, 93-288, 93-523, 94-68, 96-511, 99-499, 100-707, 101-121, 107-296
- Homeland Security Act of 2002
- Kentucky Revised Statutes Chapter 39A through 39G
- Governor of Kentucky Executive Orders 2004-1314
- The Atomic Energy Act of 1954, (PL 83-703 as amended)
- The Robert T. Stafford Disaster and Emergency Relief Act of 1966 (PL 89-769), and all amendments to date.
- Flood Disaster Protection Act of 1973 (PL 93-234)
- Earthquake Hazards Reduction Act (PL 95-124)
- The Superfund Amendment and Reauthorization Act of 1986, Title III (SARA) (42 CFR Chapter 116),
- National Flood Insurance Reform Act (PL 103-325)
- Disaster Mitigation Act of 2000 (PL 106-390)
- National Incident Management System (NIMS)
- National Response Framework (NRF)
- Presidential Homeland Security Directives 1 to 12
- Executive Order 11795, Delegating Disaster Relief Functions Pursuant to the Disaster Relief Act of 1974
- Executive Order 11988, Flood Plain Management.
- Executive Order 11990, Protection of Wetlands.
- Executive Order 12656, Assignment of Emergency Preparedness Responsibilities.
- Presidential Directive Decisions 39 & 62 – Both relating to Anti-Terrorism Responses of the Federal Government

Scope

This plan is the emergency plan as described and required in Kentucky Revised Statute (KRS) 39A and will be activated upon order of the Governor of the Commonwealth of Kentucky, the Director of the Kentucky Division of Emergency Management (KyEM) and or their authorized representatives. Parts of this plan and or the entire plan will automatically be activated:

1. Upon a general declaration of a disaster or an emergency by local, state or federal authorities
2. When required by the size and level of impact of a catastrophic event
3. As required to implement actions necessary to place emergency personnel on active readiness levels for an impending incident or scheduled event

This plan is the cornerstone document of the Commonwealth Comprehensive Emergency Management Program established to support an integrated emergency management system, providing for adequate assessment and mitigation of, preparation for, response to, and recovery from the threats to public safety and the harmful effects or destruction resulting from all major hazards. The program is a joint effort between KyEM and the locally created County Emergency Management agencies. The program is built around the unified multidisciplinary disaster and emergency response infrastructure, developed under the organizational guidance of KyEM which is focused on aligning state and local administrative, organizational and operational resources to accomplish the emergency missions, goals and objectives of the program.

KyEM remains dedicated to establishing a “Team of Teams” designed to take advantage of the skills, resources and capabilities of agencies to create a culture of community resiliency in response to the many disaster challenges that the Commonwealth faces on an annual basis.

Plan Overview

The KYEOP implements the incident management concepts as listed in the National Incident Management System (NIMS), the Federal Emergency Management Agency (FEMA) Comprehensive Preparedness Guide 101 V 2.0 and consists of the following major divisions; a Basic Plan, Emergency Support Function Annexes, Support Plans and Incident Specific Annexes.

The Basic Plan contains the general situations and planning assumptions used to develop the overall plan. It also contains an executive overview of the State Hazard Analysis and uses that to establish the most likely hazards for the Commonwealth. The Basic Plan contains a concept of operations that describes where and how the KYEOP is implemented across the various phases of emergency management and how the Commonwealth establishes general organizational roles and responsibilities. The Basic Plan delineates in general terms activation and deployment of assets, and gives basic guidance on continuity of government. The Basic Plan also establishes a plan maintenance program that ensures the adequate development, maintenance, training, and exercising necessary for the full support of the plan once it is developed.

The Emergency Support Function Annexes (ESF) describe the fifteen most likely emergency support activities to be supported by the Commonwealth during an incident or planned event. Not all ESFs will be activated during any given incident. Each incident will be evaluated and the ESFs most useful to the response effort will be activated and deployed in response to the incident. Each ESF will be assigned a Primary Agency for ESF administrative and operational duties and each ESF will be associated with support agencies having either jurisdictional or operational interest in the implementation of the KYEOP. The Emergency Support Functions are

- ESF-1, Transportation – Provides overall supervision of the Commonwealth Transportation Infrastructure to include identifying road closures on all state and local roads as well as conducting usability inspections of bridges and other transportation support structures throughout the Commonwealth for use as emergency supply, and evacuation routes. Provides for coordination, control and allocation of transportation assets in support of the movement of emergency

DRAFT DRAFT DRAFT DRAFT DRAFT DRAFT DRAFT

resources including the evacuation of people, and the redistribution of food and fuel supplies. Contracts for repair and or reconstruction of transportation infrastructure.

- ESF-2, Communications and Alerting – Coordinates the delivery of emergency communications systems and equipment to first responders and emergency managers and assists in the restoration of commercial communications to Government Agencies in coordination with the Commonwealth Office of Technology and Business providers.
- ESF-3, Public Works and Engineering – Purchases engineering and construction services necessary to provide or restore critical public facilities including water and sewer systems damaged during disasters. Purchased services include provision of emergency power supplies for critical facilities; emergency ice, snow and debris removal; technical expertise regarding the structural safety of damaged buildings and coordination of emergency repairs to public infrastructure such as levees and dams.
- ESF-4, Fire Fighting – Provides for mobilization and deployment, and assists in coordinating structural fire fighting resources to combat forest/wildland or urban incidents; provides incident management assistance for on-scene incident command and control operations.
- ESF-5, Emergency Management – Provides for the overall management and coordination of the Commonwealth's emergency operations in support of State/local government. Collects, analyzes and disseminates critical information on emergency operations for decision making purposes.
- ESF-6, Mass Care, Emergency Assistance, Housing, and Human Services – Manages and coordinates sheltering, feeding, and first aid for disaster victims and pets. Provides for temporary housing, food, clothing, and special human needs in situations that do not warrant mass-care systems.

DRAFT DRAFT DRAFT DRAFT DRAFT DRAFT DRAFT

- ESF-7, Resource Support – Coordinates the acquisition of resources through mutual aid agreements and procurement procedures for all functional areas/groups, as needed. Provides for coordination and documentation of personnel, equipment, supplies, facilities, and services used during disaster response and initial relief operations.
- ESF-8, Public Health and Medical Services – Coordinates care and treatment for the ill and injured. Mobilizes trained health and medical personnel and other emergency medical supplies, materials and facilities. Provides public health and environmental sanitation services, disease and vector control, and the collection, identification, and protection of human remains.
- ESF- 9, Search & Rescue – Provides resources for ground, water, and airborne activities to locate, identify, and remove from a stricken area, persons lost or trapped in buildings and other structures. Provides for specialized emergency response and rescue operations.
- ESF-10, Oil and Hazardous Materials Response – Provides response, inspection, containment and cleanup of hazardous material accidents or releases.
- ESF–11, Agriculture– Coordinates the response to Animal and Plant Disease incidents, food safety and general agro-security operations.
- ESF-12, Energy – Coordinates with the private sector for the emergency repair and restoration of critical public energy utilities, (i.e., gas, electricity, etc.). Coordinates the rationing and distribution of emergency power and fuel, as necessary.
- ESF-13, Public Safety & Security – Coordinates for the protection of life and property by enforcing laws, orders, and regulations, including the movement of persons from threatened or hazardous areas. Provides for area security, traffic, and access control.

- ESF-14, Long-Term Community Recovery and Mitigation – Coordinates Long-Term community recovery assistance to Local Governments and manages the State Mitigation Program.
- ESF-15, External Affairs – Coordinates the Joint Information System, manages the Commonwealth Joint Information Center and coordinates with all state agency Public Information Officers.

Support Plans are developed to meet specific ESF operational needs and may be used across a wide spectrum of events and incidents. An example of such a support plan is the Strategic National Stockpile (SNS) Support Plan which supports the activation and operation of ESF 8 Public Health and Medical Services by describing how and where federal and private medical resources may be staged, transported, and dispensed to citizens. The SNS is not related to any specific event or incident need, but does support the overall medical mission.

Incident Specific Plans provide stand alone highly focused guidance for a unique incident or event that is specific in nature and requires additional description and in-depth assignment of roles and responsibilities above and beyond the normal ESF activities. An example of this type of plan is the Chemical Stockpile Emergency Preparedness Program Plan (CSEPP). This Incident Specific Plan is written to an exacting standard established by CSEPP program guidance and is solely focused on an incident at the Blue Grass Army Depot involving chemical weapons stored at the Depot. Once this specific hazard is no longer present, this plan will be retired and will no longer apply to general emergency response within the Commonwealth.

DRAFT DRAFT DRAFT DRAFT DRAFT DRAFT DRAFT
Situation Overview

The Commonwealth of Kentucky is subjected to a variety of natural, technological, and manmade hazards and ranks eighth among U.S. States and territories in the total number of declared disasters.

The general areas impacted by floods, storms, landslides/mudslides and tornadoes are shown on the map in Figure 1. Along with the list of natural disasters are included the top five hazardous materials storage sites within the Commonwealth. The impact to citizens by technical/man-made disasters can be just as great as natural disasters. Our most catastrophic event is a major earthquake along the New Madrid Seismic Zone resulting in an immediate impact to 24 or more counties in and or near the historic center point of previous earthquakes in the area.

Figure 2 provides a snapshot of counties that have been included in Presidential Declarations of major disasters over the last ten years. With a total of 19 major disasters declared and over \$600M in damage reported, the Commonwealth has been in a near continuous loop of response, recovery and then response again. The physical, economic and social landscape of the Commonwealth has been shaped over the years by this seemingly annual disaster process.

This Page Intentionally Left Blank

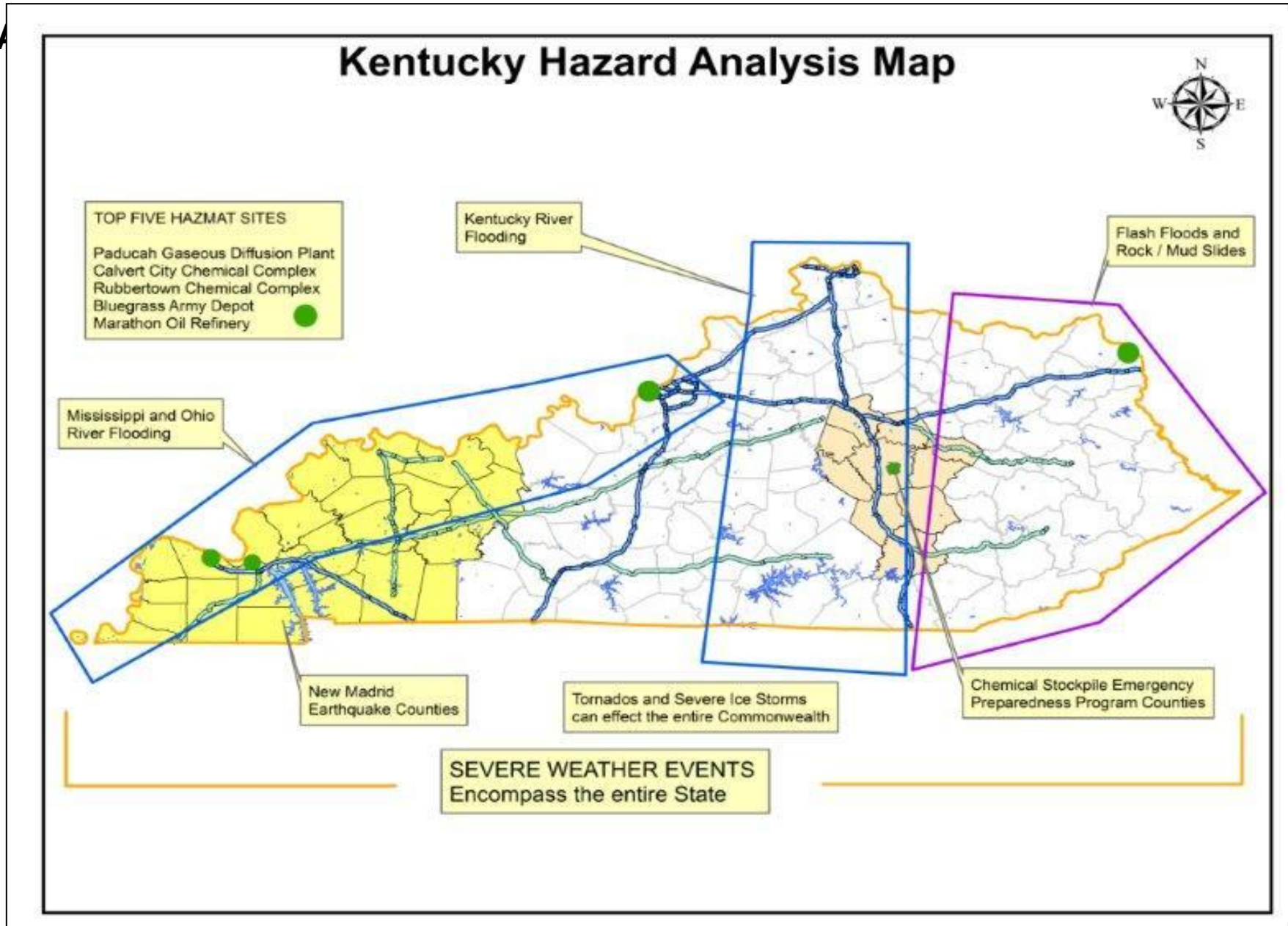


Figure 1: Kentucky Hazard Analysis Map 2000- 2011

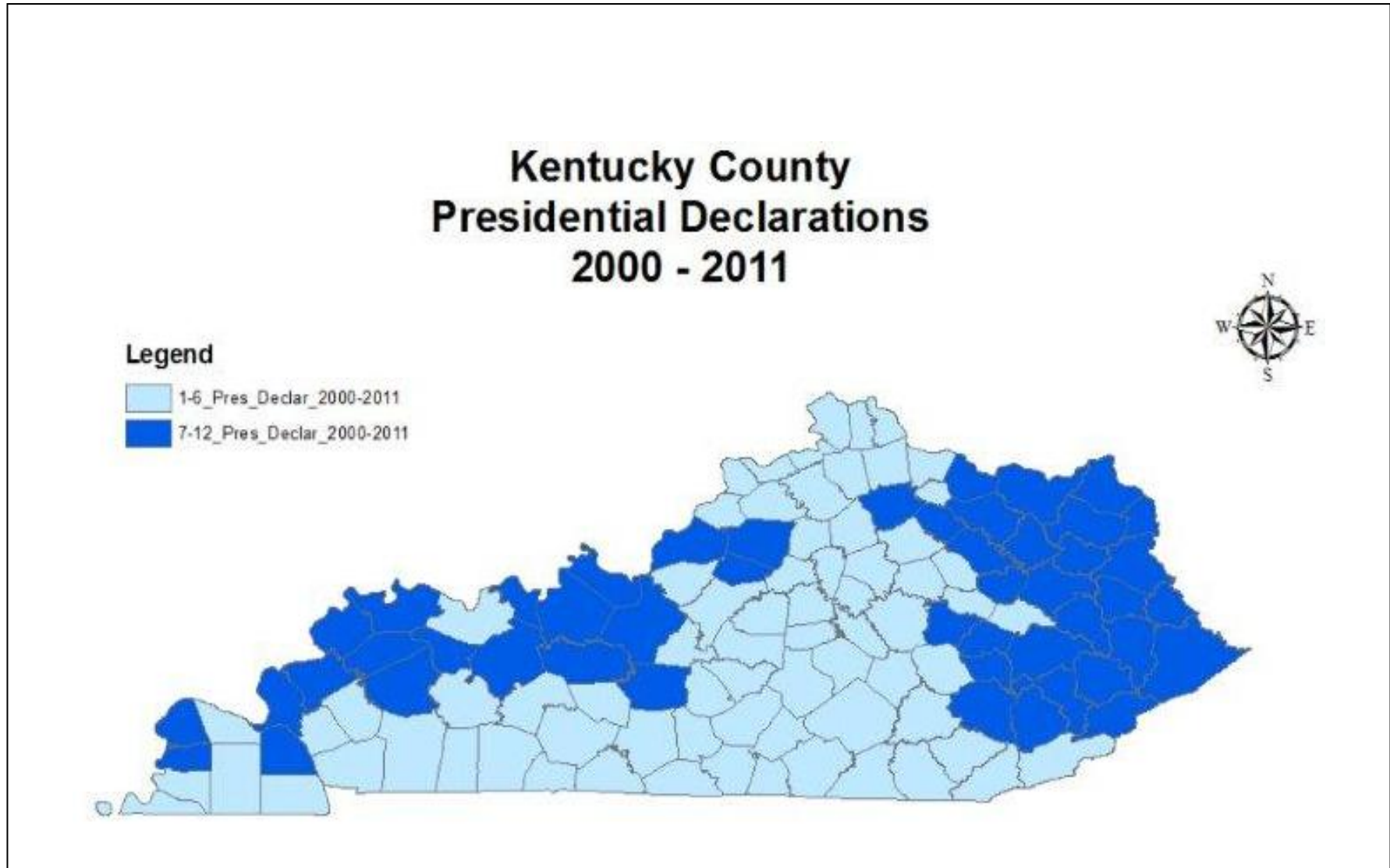


Figure 2: Kentucky County Presidential Declarations 2000 - 2011

Hazards

Due to its geology and geographical setting, the Commonwealth of Kentucky is vulnerable to a wide array of natural hazards that threaten life and property. Through research of historic impacts, past federal disaster declarations, probability rates, dollar losses to date, comparisons to local plans, and discussions with key agencies, the following four natural hazards are identified as being a high probability of impacting the Commonwealth:

- Severe Storm
- Flood
- Hail
- Severe Winter Storm

From 2000 to 2011 the Commonwealth had 19 Presidential Major Disaster Declarations and one Presidential Emergency Declaration for the Ice Storm of 2009. Of those 19;

- 18 were for Severe Storms involving tornadoes, flooding, mudslides
- 1 was for Severe Winter Storms (ice and snow)

The most catastrophic natural disasters impacting the Commonwealth would be:

- Catastrophic Earthquake
 - New Madrid Seismic Zone
- Catastrophic Failure of a Major Dam
 - Wolf Creek Dam
- Catastrophic Landslide
 - Flash Flood

The New Madrid Earthquake is the worst of the catastrophic scenarios and has the potential to impact, at a minimum, 24 out of 120 counties and over 200,000 citizens.

DRAFT DRAFT DRAFT DRAFT DRAFT DRAFT DRAFT

The Commonwealth has based its overall emergency response strategy around this event. Incident specific plans have been developed for this event and are included in this plan under the Incident Specific Plans section.

In addition to natural disasters, Kentucky may be susceptible to other manmade or medical disasters including:

Hazardous Material

Releases of hazardous materials either during transport or from stationary facilities are another potential threat to the citizens of the Commonwealth. Such releases may also include those from the numerous crude oil and natural gas pipelines that cross the state. The most common of these types of releases involve vehicles in transit through the Commonwealth. It was estimated that in 2001 over 78 million tons of hazardous materials were transported through the Commonwealth. Approximately 429 incidents occurred in that year, with over \$74M in property damage.

Hazardous Material Facilities within the Commonwealth that are considered to have the highest potential for local impact are:

- The Paducah Gaseous Diffusion Plant – Paducah
- The Rubbertown Chemical Complex – Louisville
- The Calvert City Chemical Complex – Calvert City
- Marathon Oil Refinery – Cattletsburg

In addition to the standard set of industrial hazardous substances the Commonwealth is host to the Blue Grass Army Depot Chemical Storage Facility at Richmond Kentucky. This facility stores and will soon be destroying one of the last stockpiles of nerve and blister agent within the United States. The facility and the surrounding ten counties are participants in the Kentucky Chemical Stockpile Emergency Preparedness Program (CSEPP). The CSEPP response plan is attached as an Annex to this plan under the Incident Specific Plans section.

DRAFT DRAFT DRAFT DRAFT DRAFT DRAFT DRAFT
Terrorism

According to the U.S. Department of Homeland Security, various facilities might be terrorist targets including transportation corridors, communication systems, historical sites, government centers, industrial plants and agricultural product sites.

Animal Diseases

Kentucky ranks 7th in the United States for chicken production and 13th for production of cattle. Overall, Kentucky's total agriculture output places the Commonwealth in the top 20 producers in the nation of agriculture products. There are over 200 known animal diseases transmissible to humans that pose a significant infectious risk. Among these are rabies, brucellosis, and anthrax. Infectious diseases occur in domestic and wild animals, in pet populations and in livestock.

The impact of foreign animal diseases on the economic infrastructure in the Commonwealth would be devastating. The reality of an event places this potential hazard within the top ten for the Commonwealth to deal with. The Department of Agriculture is the primary organization for coordinating veterinary services and animal health in emergencies.

The Kentucky Veterinary Medical Association represents veterinarians of the Commonwealth and acts as liaison with state agencies, humane societies, and animal control agencies. Veterinarians and humane society personnel participate on a voluntary basis in emergency operations.

The Kentucky Board of Agriculture has responsibility for issuing notices for quarantines and other measures to control the movement of animals into, through, or within Kentucky.

The Livestock Disease Diagnostic Center at the University of Kentucky provides full service animal health screening and is charged with the diagnosis of animal diseases, and the performance of tests which safeguard the health of the animal population in Kentucky. The Center helps identify infectious diseases, identify regulatory diseases, provides the means to meet export sales requirements, and provides an early warning system for impending epidemics.

DRAFT DRAFT DRAFT DRAFT DRAFT DRAFT DRAFT
Epidemiological Outbreaks

Throughout history, Kentucky has experienced numerous outbreaks of various diseases that have affected its citizens. Examples of such diseases include influenza, smallpox, tuberculosis, AIDS, cholera, polio, typhus and hepatitis. The Division of Epidemiology and Health Planning (DEHP) of the Kentucky Department for Public Health (KDPH) is responsible for the control of communicable disease, disease surveillance and investigation, injury prevention and research, vital statistics and health data.

The Infectious Disease Branch of DEHP works to eliminate, reduce and control certain communicable diseases. Local health departments provide direct care while the central office provides training, educational materials, technical and financial assistance, and program planning and evaluation. The branch provides professional consultation to the health care community as well as to individual programs within the department. It is also responsible for the selection, training and maintenance of the Epi Rapid Response Team that provides support to local health departments in controlling disease outbreaks. This mission is accomplished through three major programs - Infectious Disease, Tuberculosis Control and Sexually Transmitted Disease Control.

Note: For in-depth hazard review, see Kentucky State Enhanced Hazard Mitigation Plan – 2010, Section 4 – Risk Assessment.

DRAFT DRAFT DRAFT DRAFT DRAFT DRAFT DRAFT
Planning Assumptions

The Director of KyEM, in concert with The Adjutant General (TAG), will act for the Governor of Kentucky to coordinate all disaster and emergency response by and between all state agencies and all local political subdivisions in conformance with KRS Chapter 39A.

The resources of state government will be made available to state agencies to cope with emergencies and disasters affecting any area of the Commonwealth.

Local Governments will make every effort to support local emergency management operations and will request additional support as needed.

Federal assistance will be requested when disaster or emergency response relief requirements exceed the Commonwealth's capability. Federal assistance will be provided under the provisions of the National Response Framework (NRF).

The federal government will provide funds and assistance to areas of the Commonwealth declared major disaster areas by the President.

Federal agencies may provide unilateral assistance under their statutory authority to states affected by a major disaster in lieu of a Presidential Declaration.

Severe weather, including flash and river floods, tornadoes, high winds, heavy snow and ice storms, droughts, and other weather-related emergencies or natural disasters will continue to occur annually in the Commonwealth.

Incidents relating to the storage and transportation of hazardous materials will continue.

Industrial accidents involving the release of hazardous materials, injuries to both on-site personnel and fires affecting the safety, welfare, and economic well being of the citizens of the Commonwealth will continue to require the services of state and local emergency management personnel.

This Page Intentionally Left Blank

DRAFT DRAFT DRAFT DRAFT DRAFT DRAFT DRAFT
Concept of Operations

The Commonwealth's comprehensive emergency management system, as created by KRS 39A, recognizes three distinct types of incidents:

1. **Emergency:** Any incident or situation which poses a major threat to public safety so as to cause, or threaten to cause, loss of life, serious injury, significant damage to property, or major harm to public health or the environment and which a local emergency response agency determines is beyond its capabilities.
2. **Disaster:** Any incident or situation declared as such by executive order of the Governor, or the President of the United States.
3. **Catastrophe:** A disaster or series of concurrent disasters which adversely affect the entire area of, or a major geographical portion of the Commonwealth.

Each incident that occurs within or near the borders of the Commonwealth will receive the immediate, full focus of the Commonwealth's civil and military response capabilities with adjustments being made to activation levels and resource deployment based on a clear assessment of the incident, its impact on the citizens of the Commonwealth and the level of effort expressed by bordering states and the federal government.

KRS 39A.170 explicitly provides for the use of state equipment and personnel, not only after an incident has occurred, but also in preparedness for an incident. This law also provides district and regional state supervisors the authority to commit state resources when presented with a clear local need, without having to request additional administrative approval from higher offices.

KRS 39A.260 provides emergency workers arriving in an impacted area, from internal or external mutual aid requests, workers' compensation as well as being considered to have all the same rights and privileges of full time Kentucky emergency employees.

The Commonwealth's response and recovery resources, both state and local, will be made available to external state and local governments through the Emergency

DRAFT DRAFT DRAFT DRAFT DRAFT DRAFT DRAFT

Management Assistance Compact (EMAC) within the context of their availability for deployment and based on the minimum requirements for maintaining adequate services for the citizens of the Commonwealth.

In support of local and county emergency management programs, directors of those programs are authorized to develop mutual aid arrangements with special districts and other public and private agencies within the Commonwealth for reciprocal disaster and emergency response aid and assistance in case of a disaster. These mutual aid agreements are formed in accordance with the KyEM Mutual Aid program as described in the Commonwealth of Kentucky Statewide Emergency Management Mutual Aid and Assistance Agreement.

This agreement, endorsed by KyEM, is between each local entity in the Commonwealth of Kentucky that officially approves and adopts the agreement and thereby becomes a party to the agreement. Each party agrees to execute the agreement and provide mutual aid and assistance to other parties under the terms and conditions of the agreement. This agreement allows for counties and cities to work together and share resources without having to involve the state government and allows 12 hour deployments before reimbursement charges start. This allows quick, local response to local issues and helps to build cross county capabilities and coordination processes that improve the overall emergency response posture of the local and county participants in the program.

General

The Governor is the Commonwealth's Chief Executive and has broad powers under KRS Chapters 39A-F. These powers include the authority to declare a state of emergency, direct and allocate resources in the Commonwealth, and to request federal assistance.

A Commonwealth "Declared Emergency" occurs when the Governor or his designated successor declares through an executive order that the incident in question has impacted a sufficient number of citizens as to require the deployment of state and local response agencies. He has also determined that the incident is of such severity and magnitude that effective response is beyond the capabilities of the state and supplementary federal assistance is needed.

The Executive Order is prepared in coordination with the Governor, Director, Kentucky Division of Emergency Management and The Adjutant General of the Kentucky National Guard. The signed executive order is published by the Commonwealth Secretary of State.

In the absence of the Governor, the following line of succession will be followed:

- (1) Lieutenant Governor,
- (2) President Pro Tempore of the Senate,
- (3) Secretary of State.

The Director of KyEM, under the supervision of The Adjutant General of the Kentucky National Guard will implement emergency/operational decisions to provide the most effective response and make maximum utilization of resources. In the absence of the Director, a designated successor will direct actions authorized by statute, regulation, and provisions of this plan.

DRAFT DRAFT DRAFT DRAFT DRAFT DRAFT DRAFT

When, during a state of emergency, it becomes imprudent, inexpedient, or impossible to conduct the affairs of state government at the state capital, the Governor shall, as often as the exigencies of the situation require, by proclamation, designate a temporary location for the seat of government at the place within this Commonwealth deemed advisable, and shall take action and issue orders necessary for an orderly transition of the affairs of state government to the temporary location. (KRS 39D.010)

While the seat of government remains at the temporary location, all official acts required by law to be performed at the seat of government by any officer, independent agency, division, or authority of this Commonwealth, including the convening and meeting of the General Assembly in regular or special session, shall be as valid and binding when performed at that temporary location as if performed at the normal location. (KRS39D.010)

Each cabinet and each department of state government, and each agency of state government shall appoint not fewer than three (3) nor more than seven (7) emergency interim successors for each position specified in the Kentucky Emergency Operations Plan and the internal emergency operations procedures for that department or agency. Emergency interim successors in the order of the succession shall have the full power to exercise all powers of their department or agency and to commit its resources during a time of emergency or disaster if the person normally exercising the position becomes unavailable. If the preceding emergency successor becomes available he or she shall resume all duties from the emergency interim successor, unless he or she chooses to permit the emergency interim successor to remain in the position until relieved. (KRS39D.040)

The National Incident Management System (NIMS) will be the primary incident management system used by all agencies, private, government and non-government when responding to an incident. The only exception to this requirement being when operation of the Kentucky National Guard consistent with NIMS would result in compromising operational missions or disrupting military command authority.

DRAFT DRAFT DRAFT DRAFT DRAFT DRAFT DRAFT

Agencies responding to an incident will either establish or integrate with an existing NIMS Incident Command or Unified Command system and will operate in accordance with the rules and regulations as established by the NIMS as explained in the following figures and descriptions.

An Incident Command consists of the basic functional sections as listed in the following diagram:

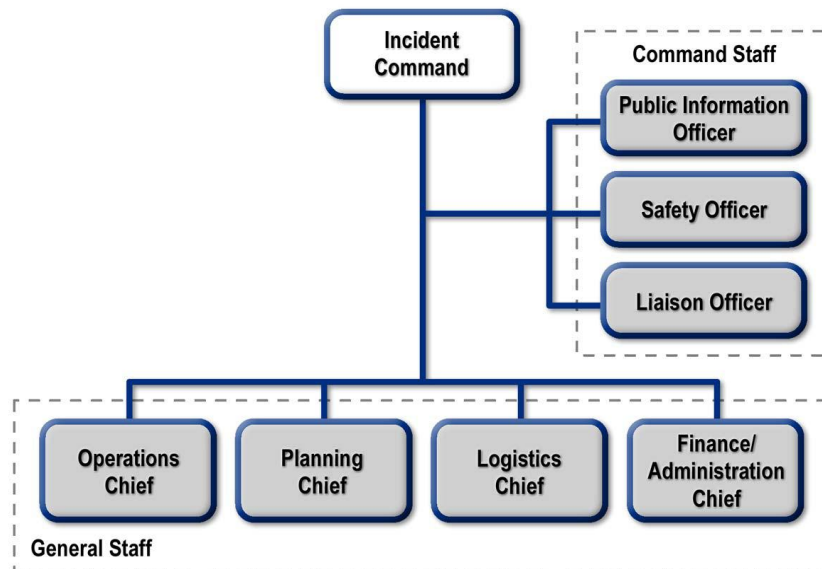


Figure 3: Single Incident Command

The Command and Staff positions are supported by individuals and directly support the Incident Command. The General Staff positions of Operations, Planning, Logistics and Finance/Administration Chiefs are in charge of sections that expand and contract as needed to fit the management requirement of the incident. At a minimum each incident must have an Incident Commander, Safety Officer and an Operations Chief.

If the complexity of the incident exceeds the ability of the single Incident Command to manage it and or the number of agencies having regulatory and statutory authority interests at the incident have grown beyond the single incident, then the Incident Commander will call a meeting of all interested parties and seek consensus on the forming of a Unified Command. This process is shown in Figure 4.

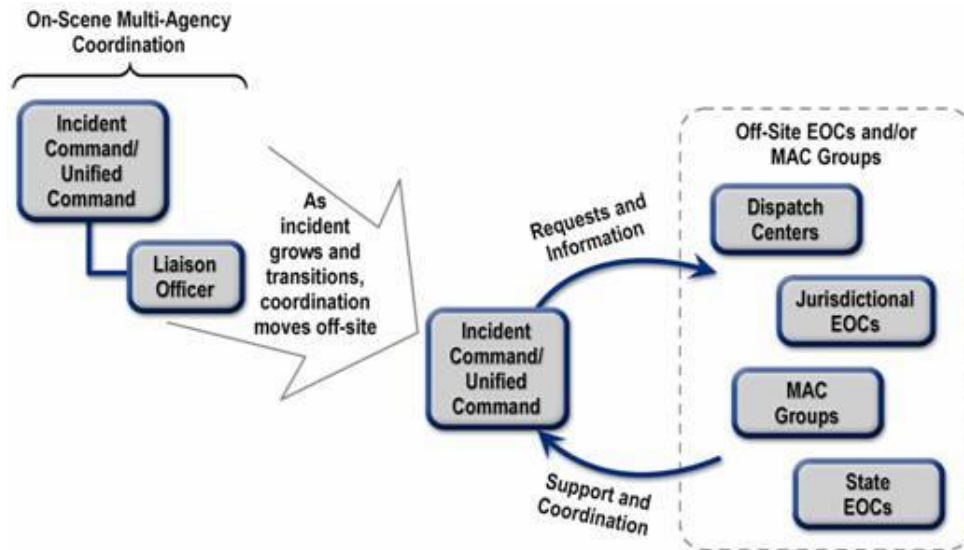


Figure 4: Transition to Unified Command

Once the Unified Command is formed, the interaction of the various agencies at the incident is the result of a cooperative process that is managed by the Incident Commander through the activated General Staff Sections and their Chiefs.

Whether using an Incident Command or a Unified Command, the reporting of information and requests for support will flow upward through a Multi-Agency Coordination Center (MAC). On a local level, the MAC is normally represented by the County/City Emergency Operations Center (EOC). The local EOC coordinates with the state responding agencies through the CEOC. Both the local and CEOC are considered forms of the MAC.

DRAFT DRAFT DRAFT DRAFT DRAFT DRAFT DRAFT
Commonwealth Emergency Operations Center (CEOC)

The Commonwealth Emergency Operations Center (CEOC) is located on Boone National Guard Center in Frankfort, Kentucky and is activated as a Multi-Agency Coordination Center in accordance with the National Incident Management System (NIMS) and is organized into coordinated support groups by major information and resource management activities.

The CEOC is maintained as the primary 24 hour warning point for all state agencies and programs that require immediate notification to the Commonwealth as part of their function. The current layout of the CEOC is provided in Figure 5.

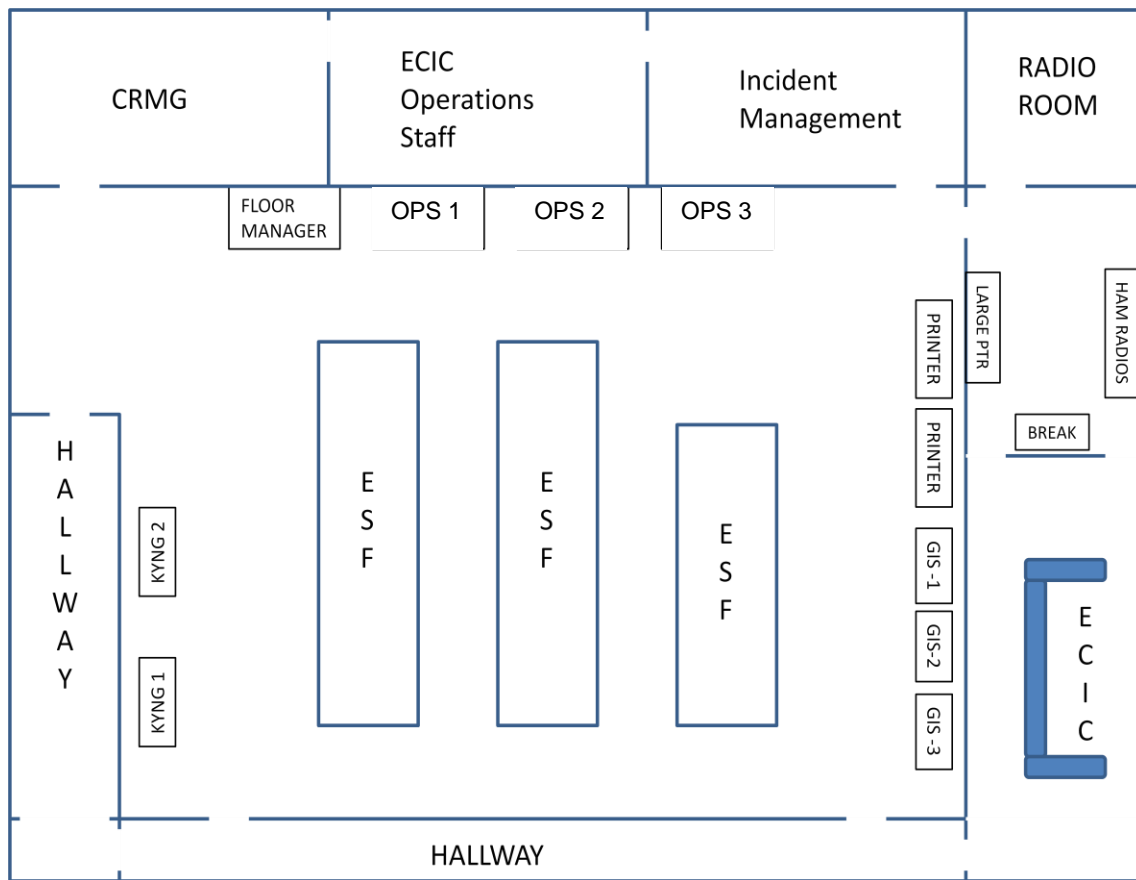


Figure 5: CEOC Layout

ECIC = Emergency Communications & Information Center (24hr warning point)

CRMG = Commonwealth Resource Management Group

ESF = Emergency Support Function

DRAFT DRAFT DRAFT DRAFT DRAFT DRAFT DRAFT

When operating in support of an incident impacting the Commonwealth, the CEOC activates one or more of the Commonwealth Support Groups that support the primary activities of the CEOC. Those Support Groups are described in Figure 6.

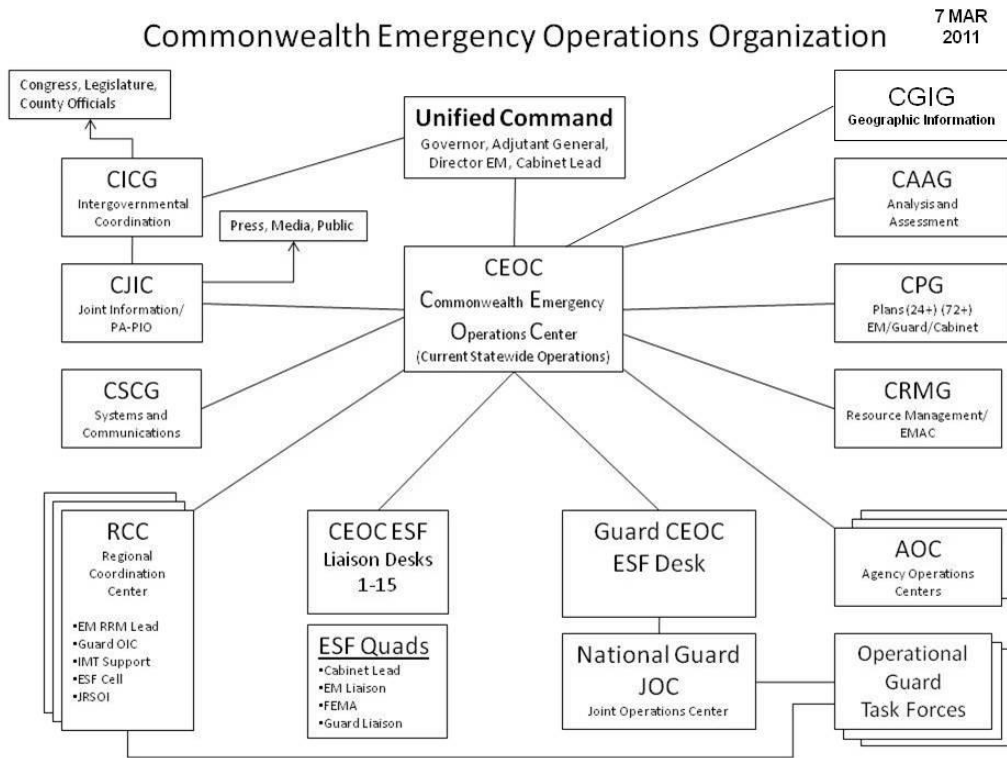


Figure 6: CEOC Coordination Groups

This graphic is for component display only and does not represent operational relationships of the groups

Commonwealth Intergovernmental Coordination Group (CICG)

The CICG Coordinates all internal and external communications between governmental agencies and elected officials within the impacted areas.

Commonwealth Joint Information Center (CJIC)

The CJIC coordinates all public affairs messages, public information requirements and the crafting of the executive message in support of incident or emergency requirements.

Commonwealth Systems and Communications Group (CSCG)

The CSCG coordinates the planning, and deployment of emergency communications systems in support of first responder and emergency management requirements.

DRAFT DRAFT DRAFT DRAFT DRAFT DRAFT DRAFT
Commonwealth Geographic Information Group (CGIG)

The CGIG provides geographic information mapping for the CEOC and its support groups as well as with local, county, state and federal partners.

Commonwealth Assessment and Analysis Group (CAAG)

The CAAG collects, assesses and analyzes emergency information, both direct and remotely collected, and produces reports detailing the current emergency situation. The CAAG also establishes the overall trend of the incident, whether it is trending better or worse, through daily updates to the CEOC and its support groups.

Commonwealth Planning Group (CPG)

The CPG develops the 24 hour and 72 hour incident action plans for the CEOC and conduct future planning based on the status of the initial response plans and the emergency information presented by the CAAG.

Commonwealth Resource Management Group (CRMG)

The CRMG coordinates all resource management actions and incident specific resource requirements based on the available resources within the Commonwealth as well as the speed with which contract and external resources can be delivered to the validated areas of need. The CRMG also tracks the expenditure of funds in support of a given incident to include the purchase of resources and the use of state personnel in support of local and county emergency activities.

Regional Emergency Coordination Centers (RECC)

The RECC is a joint civil/military Incident Command Center activated during catastrophic disasters that provides overall coordination of emergency support functions and resources at a regional level. An RECC is subordinate to a Unified Area Command.

CEOC Emergency Support Functions (ESF)

The ESF's act as operational liaisons between supporting agencies and the CEOC, providing information on the status of personnel and internal operations and facilitating the deployment of resources to areas of greatest need. When fully activated for a level 4 or 5 incident, the ESF's activate "Quads" where they form mission specific teams with emergency management and other agency representatives.

DRAFT DRAFT DRAFT DRAFT DRAFT DRAFT DRAFT
National Guard Joint Operations Center (JOC)

The JOC Coordinates the operations of all Kentucky National Guard resources assigned the mission of general military or military support to civil authorities.

Agency Operations Centers (AOC)

The AOC's are the agency versions of the CEOC. These additional operation centers allow the agencies involved in the emergency incident to fully engage their subject matter experts, communications capabilities and resource management teams in support the goals and objectives of the overall response and operations plans. The AOC works directly with ESF liaisons in the CEOC and coordinates with local internal response elements, district and community agencies.

Unified Area Command (UAC)

The UAC is a joint civil/military coordination/command center activated when the span of control over regional incident command centers exceeds the normal incident command capabilities of the CEOC.

DRAFT DRAFT DRAFT DRAFT DRAFT DRAFT DRAFT
CEOC Levels of Operations

Level 0 is an anomaly caused only by a complete electrical failure or loss of the physical structure at Boone Center. At Level 0 the Operations Manager will relocate the critical functions of the CEOC per SOP.

Level 1 is the CEOC in hot standby mode and the ECIC in 24 hour operations. By SOP the Kentucky Emergency Management is always manned at Level 1 and serves as the Commonwealth's 24 hour warning point.

Level 2 is daily operations with an Emergency Manager on call.

Level 3 is a partial activation of the EOC with all Emergency Management and National Guard personnel manning the primary operations desks. The CEOC will operate using a modified report and activity schedule.

Level 4 is a full activation requiring mandatory stand up of all Commonwealth Support Groups and at least one Cabinet Level agency represented in the CEOC to staff an ESF desk. The full 24 hour report and activity schedule applies.

Level 5 is full activation requiring all ESF desks to be staffed and all Commonwealth Support Groups will be fully activated. Standard 24 hour report and activity schedule applies.

DRAFT DRAFT DRAFT DRAFT DRAFT DRAFT DRAFT

This Page Intentionally Left Blank

DRAFT DRAFT DRAFT DRAFT DRAFT DRAFT DRAFT
Direction, Coordination and Control

The Commonwealth provides direction, coordination and control of emergency operations through a series of interconnected unified and joint command structures that take advantage of the natural day to day working relationships between emergency operations and first responder personnel.

The development of policies and strategic vision for emergency operations starts with the Commonwealth Unified Command (CUC), consisting of the Governor, The Adjutant General and the Director, KyEM.

The implementation of the policies and strategies developed by the CUC is conducted by the combined coordination and command capabilities of the CEOC and the JOC.

When needed, the CEOC and JOC have forward deploying elements that take on the role of coordinating and controlling regional emergency operations closer to the actual response area. These elements are respectively the CEOC – Forward, a Type I Incident Management Team designed to manage emergency operations in a field environment and the Joint Task Force Headquarters, a National Guard field Headquarters that can command one or more Brigade Task Forces. These two elements form the Unified Area Command (UAC).

The regional element managed by the UAC is the Regional Emergency Coordination Center (RECC). The RECC provides a regional command and coordination element consisting of a Type 1 IMT paired with a National Guard Brigade Task Force Headquarters. The RECC works in coordination with the County Emergency Operations Centers, supported by State IMT's and National Guard County Support Teams, each sized and staffed to meet the unique needs of the counties they serve. See Figure 7.

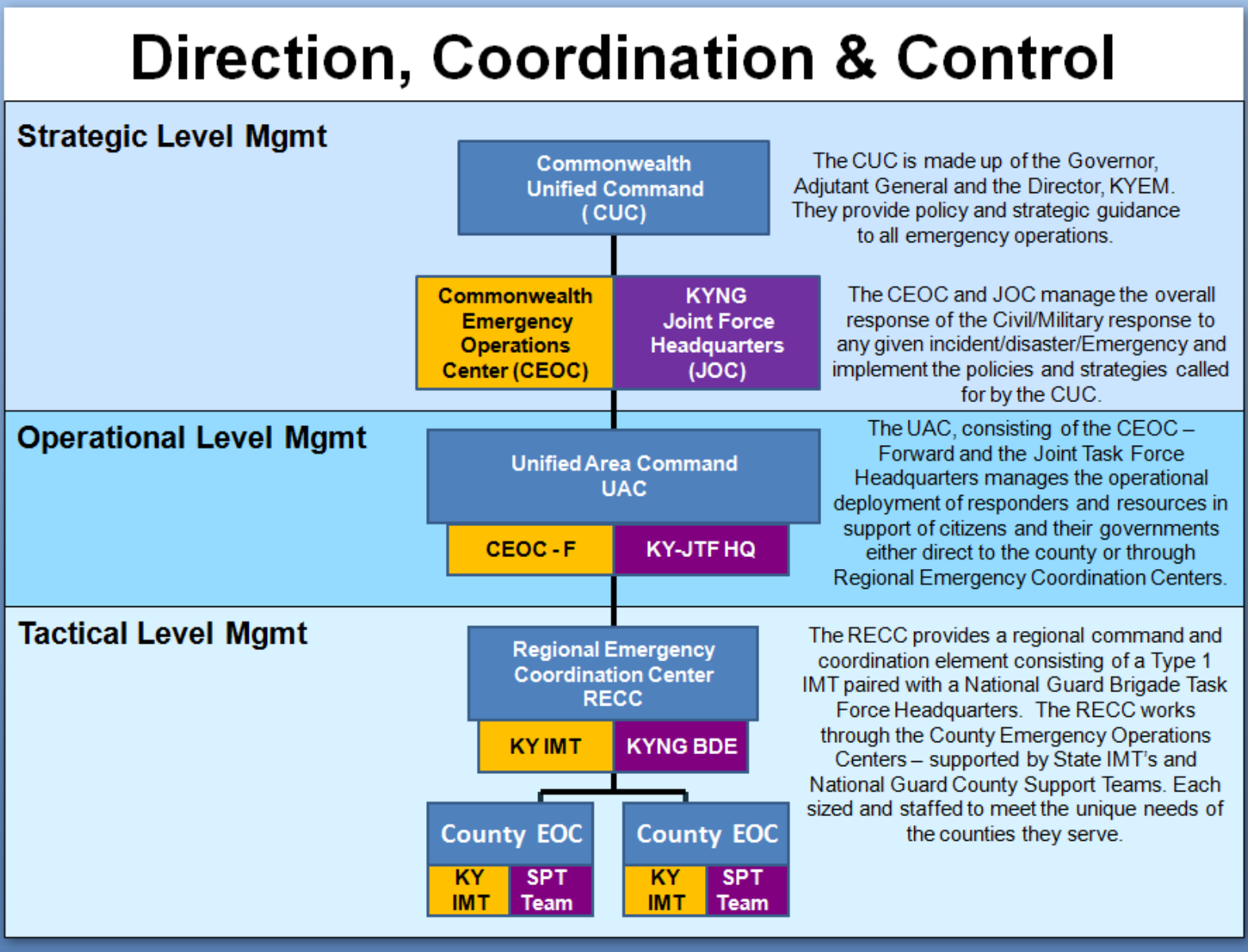


Figure 7: Direction, Coordination and Control

Information Collection, Analysis and Reporting

The Commonwealth collects, analyzes and reports emergency information through the implementation of a multi-tiered system that seeks to meet the information needs from the first responder to the senior decision makers.

The first responder in the street and the citizens directly impacted by the incident are the first line observers and reporters of emergency information. Through individual reports to 911 Centers and Emergency Operations Centers, the local government and emergency managers begin to piece together a reasonable idea of what is happening in their community. They also gather information from local sources such as street traffic cameras, web cameras and local news and radio reports, that when combined with individual reports give a wider picture of what is going on. This information is passed on, either directly to the CEOC via WebEOC, through voice or text messages or via a RECC. Information of immediate need to decision makers is sent in the form of a SPOT Report that has wide dissemination and moves through the information collection system under special markings, which insures its speed and focus directly to decision makers.

At the UAC and at the CEOC level, the Commonwealth has access to an array of general information collection systems that take the “eye witness” reports from the field and integrate them with satellite collection systems (International Agreement), airborne platforms (Civil Air Patrol), federal information collection, non-governmental reporting and information reported by Commonwealth workers responding to the incident.

The data that flows into the CEOC through these many collection streams is collated and turned in to usable information reports and briefed out to the responders, managers and decision makers through regularly scheduled reports and special report bulletins. See Figure 8.

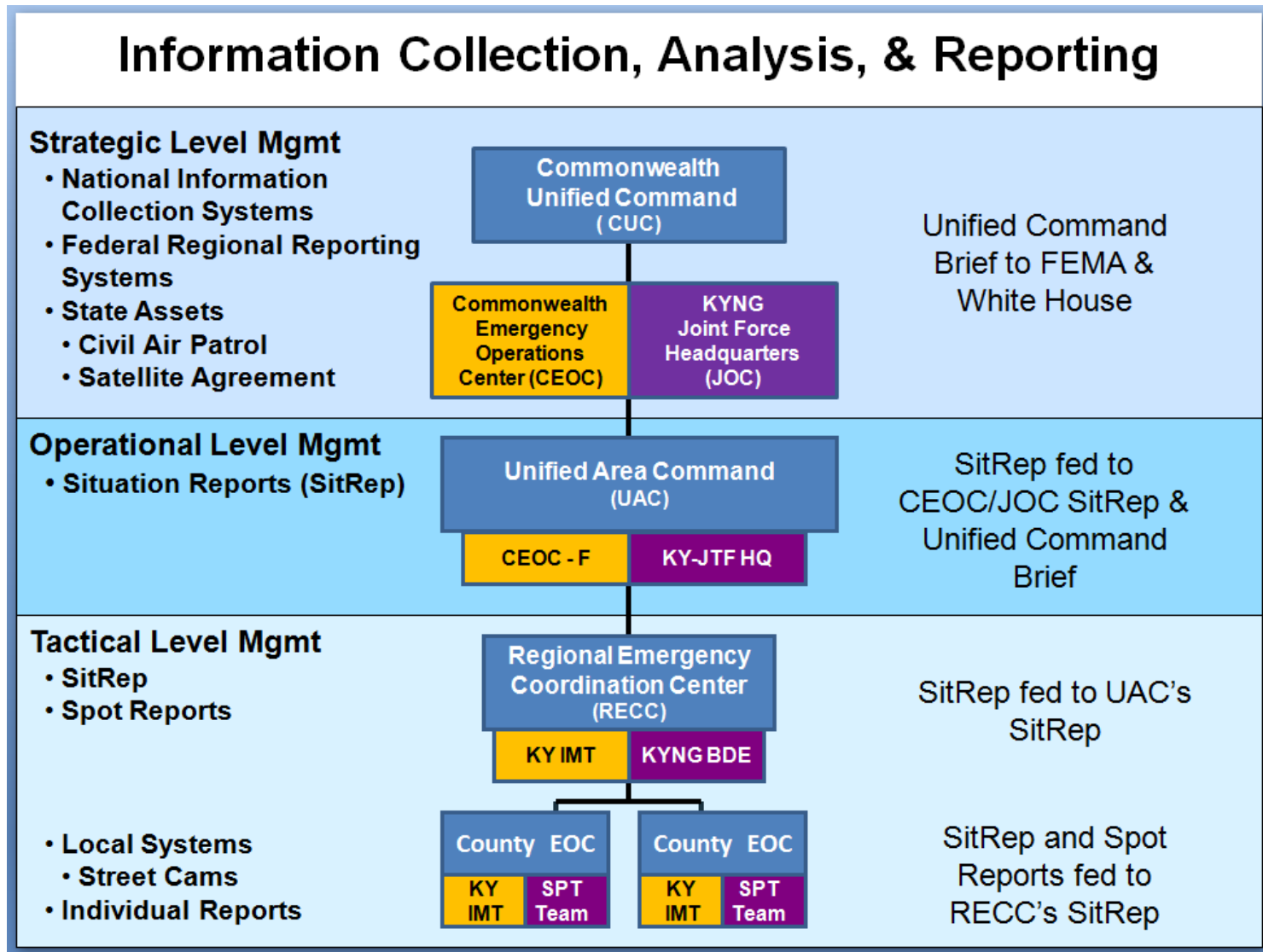


Figure 8: Information Collection, Analysis & Reporting

Communications

The Commonwealth Emergency Communications system provides emergency communications connectivity from the first responder to the Governor and is fully integrated with federal, military and non-governmental partners.

It uses standard cellular, landline (plain old telephone), VHF (Department of Military Affairs Radio System) and point to point digital microwave (Kentucky Early Warning System) to carry a wide array of emergency communications across physical, administrative and technical boundaries.

In the most extreme of emergency incidents, where the day to day communications infrastructure has been damaged either through loss of power, loss of physical systems and or degradation of transmission due to extreme weather conditions, the Commonwealth can transition its emergency communications to mobile systems capable of using amateur radio (HAM, ARES, RACES – (HF/VHF frequency ranges) or satellite radio.

Using HAM and Satellite, the CEOC will be able to transmit text, images, voice and video to a wide variety of subscribers and with a minimum amount of infrastructure. Low reliance on ground infrastructure gives the HAM and the Satellite systems their high potential for survivability and reasonable rate of reliability, regardless of the emergency situation.

The networks supported by these emergency communications systems allow all participants in the emergency response, sustainment and recovery to access emergency information and exchange ideas, plans and decisions without having to rely on standard communications infrastructure methods. See Figure 9.

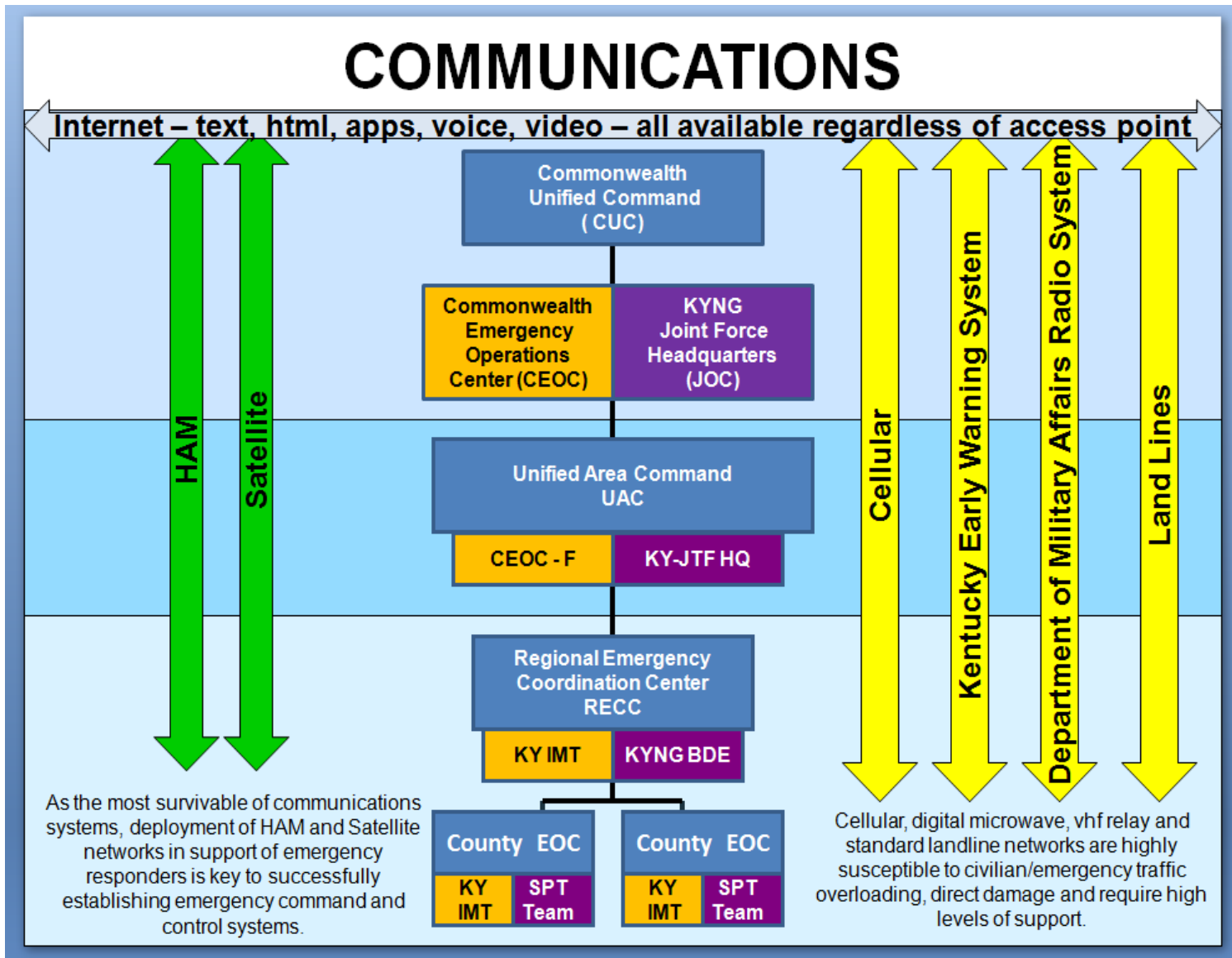


Figure 9: Communications

Assignment of Responsibilities

This section describes general emergency responsibilities of local, state and federal government agencies as well as those for business and non-governmental agencies supporting preparing for, responding to and or recovering from an incident.

Local Governments

Local governments, in coordination with their appointed Emergency Managers, will, to the maximum extent possible, assume the responsibility for managing the processes necessary for preparing for, responding to and recovering from a major incident within their communities.

When a disaster or emergency has been declared, the County Emergency response team is authorized to

- Appropriate and expend funds above normal spending levels
- Make contracts based on need, meeting basic documentation requirements and fiscal rules – on a not to interfere with delivery of service basis
- Enact cost-recovery ordinances
- Obtain and distribute equipment, materials, and supplies for disaster and emergency response purposes
- Provide for the health and safety of persons and property
- Provide emergency assistance to the victims of any disaster or emergency
- Review or approve local emergency operations plans

DRAFT DRAFT DRAFT DRAFT DRAFT DRAFT DRAFT

- Enact orders or ordinances pertaining to local emergency management programs in accordance with the policies and plans prescribed by the federal and state emergency management agencies

Activate their local EOC in order to

- Coordinate multiple emergency service operations
- Manage the delivery of emergency goods and services to citizens
- Activate and monitor the use of outside assistance
- Implement local emergency information broadcasts to citizens as necessary

Reference: KRS 39B.070 Execution of emergency powers

DRAFT DRAFT DRAFT DRAFT DRAFT DRAFT DRAFT
State Government

Commonwealth Agencies will

- Develop, administer, and maintain a statewide comprehensive emergency management program
- Develop an integrated emergency management system for the disaster and emergency response of the Commonwealth
- Coordinate with federal emergency management and other related public safety, emergency response, mitigation, or disaster recovery programs

When requested to or when emergency situations require state government support, State Government will

- Identify the requirements of the cities and counties for emergency resources and the necessities of life in the event of disaster or emergency
- Institute an emergency resource management plan and procure emergency supplies, materials, and equipment
- Use or employ in time of emergency any of the property, services, and resources of state government agencies to meet the needs of local governments and citizens

State emergency assistance or disaster relief can be given to local governments without a declaration of a State of Emergency when, in the opinion of the Governor, such resources are needed for life saving missions, or to relieve suffering and hardships.

DRAFT DRAFT DRAFT DRAFT DRAFT DRAFT DRAFT
Federal Government

The federal government is responsible for the following areas of planning and operations

- Supporting state and local governments in planning, preparedness, mitigation, response and recovery operations
- Coordinating federal aid for Presidential declared disasters and emergencies
- Coordinating civil emergency preparedness for the possibility of nuclear power plant accidents, radiation accidents and attack
- Coordinating the response to a terrorist incident through the FBI/DOJ
- Mobilization of resources during national security emergencies
- Determining which materials are strategic and critical and setting goals for the national defense stockpile

Upon declaration of a major disaster or emergency by the President, a Federal-State Assistance Agreement will be executed by the Governor and the Federal Emergency Management Agency, Region IV in Atlanta, Georgia. In the agreement, the Governor designates the State Coordinating Officer (SCO) who works with the Federal Coordinating Officer (FCO) in the coordination of relief operations for state and local government agencies and affected individuals.

The Federal Coordinating Officer is responsible for organizing and coordinating the administration of federal assistance, including those quasi-public organizations agreeing to operate under the officer's direction.

If the situation warrants, the President may direct activation of the National Response Framework (NRF). The NRF outlines the roles, responsibilities and coordinating relationships between the Federal, State and Local governments during an incident.

DRAFT DRAFT DRAFT DRAFT DRAFT DRAFT DRAFT

Primary support from the Federal Government will be implemented through the Federal Emergency Support Functions, which are reflected in the State Emergency Support Functions as described in this EOP.

Businesses and Non-Governmental Agencies

In any major incident or emergency, businesses and non-governmental agencies will play a large role in providing much needed immediate resources and support to emergency managers and first responders. The Commonwealth recognizes these groups as full partners in preparing for, responding to and recovering from an incident or emergency. All emergency planning and response agencies are encouraged to develop memorandums of agreement with their corresponding business and non-governmental agencies to make the fullest use of their capabilities.

Commonwealth Cabinets, Departments and Agencies

This section outlines the basic emergency responsibilities of primary Commonwealth Cabinets, Departments and Agencies engaged in support of the citizens and their governments before, during and after an incident.

In support of emergency operations when responding to incidents both internal and external to the Commonwealth, all Cabinets, Departments and Agencies of the Commonwealth will, at a minimum, support the following emergency actions

- Take those measures necessary to ensure that they can continue to operate during times of disaster or emergency,
- Protect their vital records
- Designate at least four (4) persons to work in the CEOC, per agency, preferably by title, who may act for the agency, and for its major component operations
- Train their employees with regard to the contents of the agency emergency operations procedures

DRAFT DRAFT DRAFT DRAFT DRAFT DRAFT DRAFT

- Give any additional training necessary to implement the procedures during times of emergency or disaster

- Send an employee of the agency with full authority to take any action on behalf of the agency to
 - The CEOC
 - Area offices of the division,
 - Commonwealth command posts or other designated location during periods of emergency or disaster.

In the event of a major incident within the Commonwealth all cabinets, departments and agencies may allow their employees to engage in disaster and emergency response activities, regardless of the jurisdiction requesting the support.

State employees assigned to or volunteering for this duty shall be considered as being employed by the agency by which they are regularly employed and shall continue to receive salary and benefits while engaging in disaster and emergency response work.

Office of the Governor

The Governor is the Chief Executive of the Commonwealth. The Governor is the Commander-in-Chief of the military forces of the Commonwealth, the Chief Executive of the state administrative organization, and has the authority, with some exceptions, to fill local and state governmental vacancies. The Governor also has certain legislative powers, among which is the authority to call special sessions of the General Assembly, and to adjourn the legislature under certain conditions. The Governor is the ultimate and final authority for all disaster and emergency operations in Kentucky.

In the event of a major emergency or disaster, the Governor may declare that a state of emergency exists. Under a state of emergency, the Governor has the following additional authorities as per KRS39A

DRAFT DRAFT DRAFT DRAFT DRAFT DRAFT DRAFT

- To enforce all laws, rules and regulations relating to emergency operations, and to assume direct operational control of all response organizations.

- To seize, take, or condemn property for the protection of the public, to support the armed forces, or for the support of federal emergency operations including:
 - All transportation and communications systems
 - All fuel supplies of whatever type
 - Food, clothing, equipment, materials, medicines, and all necessary supplies
 - Facilities, including buildings and plants

NOTE: Firearms and ammunition are exempt from this authority

- To sell, lend, give, or distribute all or any such property to the citizens of the state and to account to the State Treasurer for any such funds received for such property

- To make compensation for the property seized, taken, or condemned

- To request assistance from agencies of the United States as necessary and appropriate to meet the needs of the Commonwealth

- To perform and exercise such other functions, powers and duties as may be necessary to promote and secure the safety and protection of the civilian population

The Governor is also to ensure that command and control procedures are in place, conduct command and control readiness actions, alert government personnel and population, and provide staff for the CEOC.

The Governor is responsible for economic stabilization, if so ordered. Economic stabilization is to provide, in concurrence with federal and state policy, interim economic stability controls and emergency measures for the rationing of food, petroleum products,

DRAFT DRAFT DRAFT DRAFT DRAFT DRAFT DRAFT

and other essential items to consumers, and the stabilization of prices, wages, salaries and rents.

The Governor is Commander-in-Chief of the state's military forces. To become operational, the Kentucky National Guard must be placed in State Active Duty Status by the Governor, or designated alternate. The request for activation may originate at the local level by a County Judge/Executive or Mayor and be forwarded to KyEM in Frankfort. The Governor can activate state military forces without any local request.

Department of Military Affairs (DMA)

DMA is the primary administrative coordinating agency for the Kentucky National Guard and the Kentucky Division of Emergency Management.

Kentucky National Guard (KYNG)

Upon activation by the Governor, the Kentucky National Guard, Department of Military Affairs, will support state and local agencies in disaster and emergency operations by allocating available resources to mission-type requests made to the CEOC. Military commanders have the authority to take immediate action to save human life, to prevent suffering, or to mitigate damage or destruction of property.

During emergency operations, the National Guard may provide assistance for

- Access control
- Law enforcement
- Evacuations
- Transportation of supplies
- Ground and air transportation
- Emergency transport of injured persons in MEDEVAC helicopters
- Radiological monitoring
- Communications

- Warning
- Search and rescue

The National Guard can also make available to local authorities the 41st Civil Support Team in situations where use of weapons of mass destruction is suspected or confirmed or where additional monitoring for hazardous materials is required to protect the public.

In situations where the National Guard is activated in support of Federal missions and unable to respond, because of national defense commitments, the Governor under KRS Chapter 37 is authorized to raise a State Militia.

Division of Emergency Management (KyEM)

The Kentucky Division of Emergency Management (KyEM) is the lead state agency for disaster and emergency response planning and response coordination. KyEM is responsible for advising the Governor, government officials, and local governments of the nature, magnitude and possible effects of a natural, manmade, technological, homeland security, or war related disaster or emergency. This division will also advise state and local government officials of increased readiness actions and alerts in the event of a war related crisis.

Additional KyEM duties are to

- Render advice and assistance to state and local government agencies in developing and revising emergency operations plans, public information, training programs, funding, tests and exercises, and proper administration of local programs
- Coordinate the functions of state government involved in response operations including liaison with federal and private agencies.
- Maintain all equipment, resource data and rosters necessary to conduct operations at the CEOC and UAC and RECC's

- Coordinate, as necessary, planning and response operations with adjoining states
- Maintain, revise and distribute the KYEOP and provide periodic training to state KyEM personnel and agency coordinators to test and evaluate the KYEOP and related operating procedures
- Develop local planning guidance
- Conduct operations as necessary in the CEOC or alternate location twenty four hours a day from the implementation of the KYEOP until the resolution of the situation
- Develop, maintain and operate the Commonwealth's 24 hour National Warning System and Warning Point for all federal programs required to report incidents to the National Operations Center in Washington, DC.
- Operate the Commonwealth's 24 hour warning point for chemical release reporting to the State's Emergency Response Commission as required under the Emergency Planning and Community Right to Know act
- KSP HQ, Post 12 will act as the backup 24 hour Warning Point for the Commonwealth
- Be the primary Commonwealth agency responsible for public information during disasters and emergencies that informs the populace of the developing situation, provides instructions for protection, controls rumors and speculations, and releases information needed for the safety and welfare of the citizens of the state
- Provide coordination of regional or statewide rescue services as needed

DRAFT DRAFT DRAFT DRAFT DRAFT DRAFT DRAFT

- Coordinate and operate the emergency operations reporting system through the CEOC as needed during natural, manmade, technological, homeland security, and war related situations. This system is designed to provide for the maximum sharing of essential information by all emergency services at all levels, laterally and between jurisdictions. The system will provide information during all operational periods.

Through its Recovery Staff, KyEM is also responsible for

- Coordinating and directing recovery programs and damage assessments including compiling preliminary damage estimates and recording all important data in the CEOC to be used to document response and recovery activities
- Coordinating and compiling a complete damage assessment report according to federal guidelines
- Recommending emergency repairs
- Recording related expenditures
- Assisting in securing external aid to restore damaged property
- Implementing all necessary recovery operations

KyEM will assist the Governor in requesting a major disaster or emergency declaration. If a Declaration is authorized by the federal government, KyEM is responsible for Disaster Application Centers, Individual and Family Grant Programs, and the Public Assistance Program for state, local governments, and private-non-profit organizations.

KyEM assists in coordination of services provided by private, non profit and non-governmental agencies during a disaster.

DRAFT DRAFT DRAFT DRAFT DRAFT DRAFT DRAFT
Kentucky Community Crisis Response Board (KCCRB)

In natural or man-made disasters, or under national security conditions, events occur that necessitate the coordination and delivery of crisis intervention and disaster mental health services.

The Kentucky Community Crisis Response Board (KCCRB) created under KRS Chapter 36 is the lead disaster behavioral health agency and primary disaster behavioral health service for the Commonwealth.

KCCRB ensures an organized, rapid and effective response in the aftermath of crisis and disaster. The KCCRB credentials and maintains a statewide network of trained professional volunteer responders and deploys rapid response teams to crisis and disaster sites.

KCCRB is responsible for the development and maintenance of the Disaster Behavioral Health Support Plan.

Kentucky Office of Homeland Security (KOHS)

The Kentucky Office of Homeland Security (KOHS) serves as the coordinating agency between the Commonwealth and the U.S. Department of Homeland Security (DHS).

KOHS coordinates and directs vulnerability assessments of Critical Infrastructure within the Commonwealth.

KOHS insures that threat levels promulgated by the DHS are disseminated to state agencies and to the citizens of the Commonwealth.

KOHS is responsible for conducting briefings concerning homeland security issues when the CEOC is activated.

KOHS serves as the liaison link between the FBI Joint Operations Center (FBI-JOC) when it is activated by the FBI during a Terrorist/WMD activation.

DRAFT DRAFT DRAFT DRAFT DRAFT DRAFT DRAFT

KOHS is responsible for sanitizing classified material that needs to be known by non-law enforcement agencies responding to a terrorist or WMD incident and making it available to the CEOC for distribution to the representatives within the CEOC and the responding incident command structure.

Justice and Public Safety Cabinet

The Justice and Public Safety Cabinet is the state entity responsible for criminal justice services, which encompasses law enforcement activities and training; prevention, education and treatment of substance abuse; juvenile treatment and detention; adult incarceration; autopsies, death certifications and toxicology analyses; special investigations; paroling of eligible convicted felons; and long range planning and recommendations on statewide criminal justice reform issues.

Kentucky State Police (KSP)

The Kentucky State Police (KSP) is the primary state agency for law enforcement operations and coordination. KSP will maintain law and order through

- Traffic and crowd control
- Prevention of crime against people and property
- Support to shelters
- Security of essential locations

Kentucky Vehicle Enforcement will support other KSP officers in providing law enforcement, communications, warning and radiological monitoring. KSP will be assisted by, and work with, other state and local law enforcement agencies.

Office of the Medical Examiner

The scientific staff members of the Kentucky Office of the Medical Examiner assist Kentucky coroners and law enforcement agencies in all aspects of death investigation. Central to the role of the office is the performance of the forensic autopsy, to aid in the determination of cause and manner of death, and identification of the deceased. During declared disasters the Office

- Assists and coordinates mortuary services

DRAFT DRAFT DRAFT DRAFT DRAFT DRAFT DRAFT

- Directs the collection of necessary vital records for identification of dead

Department of Corrections

The Department of Corrections protects the citizens of the Commonwealth and provides a safe, secure and humane environment for staff and offenders in carrying out the mandates of the legislative and judicial processes; and, to provide opportunities for offenders to acquire skills which facilitate non-criminal behavior.

During a declared emergency or disaster the Department may be requested to

- Furnish equipment and personnel for reception and care operations, if resources permit
- Provide housing for inmates from local jails and evacuated state facilities in a severe disaster or war related crisis

Transportation Cabinet (KYTC)

KYTC is responsible for coordination of the state's transportation resources during a declaration of emergency. The Cabinet will also establish the priority and/or allocation of transportation resources, processing of all transportation requests, coordinating the management of air and marine traffic with guidance from assisting agencies and private industry, determining the priority of highway repair, conducting damage assessment, and appropriate emergency management coordination with state agencies, local jurisdictions, and neighboring states. KYTC also contracts for the repair and or reconstruction of transportation infrastructure across the Commonwealth.

Department of Highways

The Department of Highways is the primary state agency for coordinating public works resources to be used for

- Emergency flood fighting operations to protect lives, property and services
- Clearing debris which hinders operations

DRAFT DRAFT DRAFT DRAFT DRAFT DRAFT DRAFT

- Performing repairs to roads, bridges, drainage ditches, and public facilities as appropriate

KYTC has a Transportation Operations Center (TOC) which is responsible for directing operations and resources within the Cabinet.

Energy and Environment Cabinet (EEC)

EEC, through its organization of departments and divisions, will provide emergency environmental and energy related technical services as required. In the event of a severe situation, or war related crisis, this cabinet is authorized to develop and direct resource management functions for drinking water. EEC has a response center, which is responsible for directing operations and resources within the cabinet. This center is the contact point within the cabinet for emergency response.

Department for Environmental Protection (DEP)

The mission of the Department for Environmental Protection is to protect and enhance the natural environment of Kentucky.

Division of Environmental Program Support

Through its Environmental Response Team (ERT), this Division provides oversight for the contracting of outside environmental monitoring, response, and clean-up services in the event of a hazardous material spill or release. The Environmental Services Branch of this Division will provide laboratory services to support the ERT as requested.

Division of Water (DOW)

The Division of Water will provide emergency technical assistance for hazardous material emergencies; wastewater disposal, and for the prevention and alleviation of water pollution. The DOW in conjunction with the Department for Public Health is responsible for insuring the safety of municipal drinking water supplies, and for the supervision of emergency engineering operations to restore normal municipal water supply services. DOW controls and regulates non-federal dams and impoundments, allocates emergency supplies of fresh drinking water, and coordinates the flood insurance program for Kentucky.

DRAFT DRAFT DRAFT DRAFT DRAFT DRAFT DRAFT

Division of Waste Management

Division of Waste Management will provide technical assistance for hazardous materials emergencies and assist in the location of sites for debris disposal.

Division for Air Quality

The Division of Air Quality will provide technical assistance for the prevention and alleviation of air pollution. This division provides control and regulation of environmental quality.

Department for Energy Development and Independence

The Department for Energy Development and Independence will be the primary agency responsible for monitoring, collecting, analyzing and dissemination of information on the energy networks within the Commonwealth.

Department for Natural Resources

This department, through its divisions and partnerships, provides technical assistance, education and funding to help landowners, institutions, industries, and communities in conserving and sustaining Kentucky's natural resources. In addition, the department inspects timber harvests and mining operations to ensure the protection of our citizens, our environment and our workers.

Division of Forestry

The Division of Forestry will provide equipment and personnel for communications and law enforcement support. The division will also furnish equipment and personnel to assist in damage assessment, debris removal and transportation. Division of Forestry furnishes personnel and equipment for fire suppression operations of wildfire.

Division of Mine Reclamation and Enforcement

This Division will provide communications support, and may provide personnel and equipment for search and rescue, as well as damage assessment as needed.

Public Service Commission (PSC)

PSC is an independent commission administered under the Energy and Environment Cabinet. PSC will assist in the coordination of emergency power, as well as natural

DRAFT DRAFT DRAFT DRAFT DRAFT DRAFT DRAFT

gas, electricity and telephone restoration and distribution. PSC will also assist in the damage assessment of the natural gas, electricity and telephone industries.

Kentucky Fire Commission

The Kentucky Fire Commission is the primary state agency that coordinates the provision of technical assistance to local fire fighting agencies.

Public Protection Cabinet

This Cabinet provides regulatory oversight of the Commonwealth’s banking, gambling, housing construction, insurance and certified occupations and professions. For disasters, the Department of Housing, Building and Construction provides the most direct support through the Commonwealth Office of the Fire Marshall.

Department of Housing, Building and Construction

The mission of this agency is to protect lives and property through educational programs, licensing, administration of codes and standards relating to the construction and maintenance of buildings and regulated structures, and inspection.

The purpose of the agency is to enforce statewide standards for building construction. The agency also ensures fire and life safety in existing buildings; licenses/certifies plumbers, electricians, boiler contractors, sprinkler and/or fire alarm contractors and building inspectors.

Office of the State Fire Marshal

The Office of the State Fire Marshal provides support and technical assistance to local fire fighting agencies. The Fire Marshal will provide technical support and direction when required at hazardous materials emergencies. The State Fire Marshal will assist in damage assessment as required.

Kentucky Labor Cabinet

The Cabinet is concerned with all activities relating to labor, wage and hour issues, occupational safety and health of employees, child labor, apprenticeship, workers’ compensation insurance, and all other matters under the jurisdiction of the Labor Cabinet. In addition, the Office of the Secretary serves to coordinate and promote positive and progressive working relationships between labor and industry, while simultaneously enforcing Kentucky’s labor laws.

During declared emergencies the Labor Department will manage the implementation of the Occupational Safety and Health Program for the Commonwealth as well as assist in the organization and use of underutilized manpower throughout the Commonwealth.

Cabinet for Health and Family Services (CHFS)

CHFS is the primary state agency responsible for coordinating and regulating health medical and social support services during emergency situations or disaster events. During such circumstances, the Department for Public Health is responsible for coordinating (either directly or indirectly through various regional and local partnerships) the assessment of public health/medical needs, disease surveillance, mobilization of trained health and medical personnel and emergency medical supplies, provision of public health environmental sanitation services, food safety and security, disease and vector control, safety and security of drugs, biologics and medical devices distributed via the Strategic National Stockpile (SNS) program, establishment and staffing of special medical needs shelters and mass fatality management. The Department for Public Health also assists in the handling, analysis and identification of hazardous materials.

The Department for Community Based Services (DCBS)

DCBS may provide individuals qualifying under various state and federal programs with benefits to cover food, clothing, shelter, utilities and/or heating fuel, home repairs, furnishings, transportation, or childcare. In addition, DCBS will provide

- Chore services, transportation, home-delivered meals, and protective services for the aged, blind, and disabled designed to assist them in remaining in their own homes
- Emergency shelter care for children
- Foster care for the aged (provision of a substitute family life experience in an agency supervised home for an individual aged sixty (60) or more who needs temporary, emergency, or long term care outside his/her own home)

DRAFT DRAFT DRAFT DRAFT DRAFT DRAFT DRAFT

- Foster care for children to include the provision of a substitute family life experience in an agency supervised home, or a licensed child care facility, for children who need care for a period of time during which the family environment is either non-existent or greatly hampered because of some social, emotional, or physical problem
- Counseling with individuals about alternate care to include referral to and placement of individuals in child-care facilities, family care homes, personal care homes, intermediate care facilities, licensed skilled nursing facilities, hospitals for the purpose of recuperation, or treatment of non acute illness
- The department may provide personnel to assist in staffing the individual Family Grant Program

All departments within CHFS will furnish support, if required, for damage assessment operations.

Education and Workforce Development Cabinet

The Kentucky Education and Workforce Development Cabinet is determined to provide life-long educational and workforce services through seamless, efficient and accessible learning opportunities for all Kentucky's citizens, from pre-school to senior citizens. During declared emergencies the Cabinet will oversee the implementation of emergency/safety plans for all Commonwealth schools and will assist in the coordinated use of school facilities, through local boards of education, for sheltering and transport assets for local and regional evacuations.

Kentucky Center for School Safety

The Kentucky Center for School Safety has developed an Emergency Management Resource Guide to be used by schools in the event of emergency events. This Resource Guide includes a guide for the Mitigation and Prevention, Preparedness, Response, and Recovery phases of emergency management for a large number of situations. This Resource Guide is intended to be used by Kentucky elementary and secondary schools as a template for the development of site-specific plans. In the

DRAFT DRAFT DRAFT DRAFT DRAFT DRAFT DRAFT

event of an emergency in a Kentucky school, KyEM will, to the extent practical, coordinate response with existing school emergency plans.

Department of Education (KDE)

The Department of Education is responsible for providing resources and guidance to Kentucky's public schools. During emergency events the Department of Education may be called upon to provide resources such as school buses for emergency transportation and/or school facilities for sheltering. In the event that evacuation of a public school or the emergency transport of students becomes necessary, the Department of Education will be responsible for coordinating this effort with KyEM and other responding State Agencies. The Department of Education will coordinate mass feeding, shelter and transportation using personnel and equipment of local school systems. The department is also responsible for the surplus property program for the state.

Kentucky Educational Television (KET)

Kentucky Educational Television will assist by broadcasting warnings over its television network and has the capability of providing digital emergency communications connectivity through its KET 4 digital broadcast system. General public information will also be telecast over the system.

Department of Library and Archives (DLA)

The Department for Library and Archives will assist in the dissemination of information through the statewide KENCLIP program. The department will assist in the preservation and restoration of vital public records.

Kentucky Workforce Investment Board

This Department is the primary agency for manpower resources and management in the Commonwealth and is responsible for development and operation of a manpower management system in the event of a severe disaster or war related crisis.

Economic Development Cabinet

The Economic Development Cabinet, in the event of a severe disaster or war related crisis, is responsible for assisting the Governor in stabilizing the economy of the Commonwealth and developing plans for full restoration of the Commonwealth's general economy.

Department of Fish and Wildlife Resources

The Department of Fish and Wildlife Resources will furnish personnel and equipment to support incident management, communications, search and rescue, damage assessment, debris removal and transportation. The Department's Division of Law Enforcement will provide equipment and personnel for law enforcement and communications support.

Department of Parks

The Department of Parks will furnish personnel and equipment to support search and rescue, law enforcement, damage assessment, communications, debris removal, emergency shelter, mass feeding, and lodging for emergency workers.

Department of Agriculture (KDA)

The Kentucky Department of Agriculture manages the programs that support the development of agriculture in the Commonwealth. The Department assists in the distribution and safety of food as well as providing guidance on the management of animals and crops.

Division of Food Distribution

In the event of a severe disaster or war related crisis, the Department of Agriculture through its programs and offices is responsible for the Food Resource Board. This board will perform food resource management. In the event of the operation of a shelter, due to an ordered evacuation, the Department will support shelter management with food coordination.

Office of State Veterinarian

The Office of State Veterinarian provides technical assistance to all State Agencies in the event of exposure of livestock and farm animals to toxic substances or epidemiological diseases. The Office also has a trained and equipped Incident Management Team and Mobile Operations Center that can be called to respond to any homeland security emergency relating to agriculture

Division of Environmental Sciences

This Division provides technical assistance in the use and disposal of pesticides and their impact on the environment.

Personnel Cabinet

DRAFT DRAFT DRAFT DRAFT DRAFT DRAFT DRAFT

The Personnel Cabinet will assist in coordinating the utilization of manpower within state government through identification of personnel with emergency related skills and or work positions that are considered critical to the continuity of government.

Finance and Administration Cabinet (F&AC)

F&AC will coordinate and assist state agencies in emergency allocation of strategic materials, and procurement and/or leasing of supplies and services. F&AC is responsible, in the event of a severe or war related crisis, for the Construction/Housing and Engineering Board and for the Telecommunications Board. These boards are for resource management.

In the event of a Presidential declared disaster, the F&AC will provide tax information and tax assistance to the victims.

In the event of a severe disaster or war related crisis, the Secretary of the Finance and Administration Cabinet will be the Chairman of the Economic Stabilization Board for Kentucky. This board will support, implement, and administer federal and state economic stabilization measures, and will coordinate its own fiscal measures with the overall state and federal policies.

The Department for Facilities and Support Services

This Department is responsible for emergency power for the Capitol, damage assessment, emergency engineering services, and allocation of space in state-owned buildings. The department will be responsible for related funding and site preparation, to include provision of essential utilities for temporary housing obtained from the federal government.

Volunteer Organizations Active in Disasters (VOAD)

Various volunteer and private relief organizations will act in close cooperation with federal, state and local governments to provide assistance necessary to relieve human suffering and meet human needs in the event of a natural, technological, or war related crisis. These organizations include, but are not limited to the, Salvation the Army, Civil Air Patrol and Mennonite Disaster Service. These agencies may assist in search and rescue operations, reception and care, transportation, health/medical, construction/public works and recovery.

DRAFT DRAFT DRAFT DRAFT DRAFT DRAFT DRAFT
The American Red Cross (ARC)

In 1905, the American Red Cross received a Charter from the Congress of the United States authorizing and obligating it to “carry on a system of national and international relief in time of peace and apply the same in mitigating the sufferings caused by pestilence, famine, fire, floods, and other great national calamities, and to devise and carry on measures for preventing the same.” Red Cross relief efforts focus on providing basic human needs including food, shelter, mental and physical health care immediately after a disaster has occurred.

DRAFT DRAFT DRAFT DRAFT DRAFT DRAFT DRAFT

This Page Intentionally Left Blank

DRAFT DRAFT DRAFT DRAFT DRAFT DRAFT DRAFT
Plan Management

Development

The Kentucky State Emergency Operations Plan is a multi-tiered document developed through the coordination and cooperation of all State agencies as mandated by Kentucky Revised Statue 39A. The Kentucky Division of Emergency Management (KyEM) is directed to develop and maintain a comprehensive, risk-based, all-hazards disaster and emergency response plan entitled the Kentucky Emergency Operations Plan (KYEOP).

KyEM approaches planning as a function of the overall preparedness effort of State Government and the Commonwealth’s various internal jurisdictions. Each responsible jurisdiction reviews its applicable hazards and then develops Emergency Operations Plans (EOP) that guide the overall response to the given hazards. Where applicable additional response guidance is given in Support Plans and, if required, separate Incident Specific Plans are developed to further describe the who, what, when and where of a jurisdiction’s emergency response. All agencies that have a role in the jurisdiction’s response to an event or an incident will be referenced within the planning process and will be given ample opportunity to be included in the overall development of the jurisdiction EOP. Each agency assigned a primary or supporting role through the implementation of the EOP will either directly develop or assist in the development of Standard Operating Guidelines to insure clear coordination of effort during the jurisdiction’s response.

Maintenance

Elements of the KYEOP will be activated and exercised on an annual basis as part of the Annual CSEPP Community Exercise with the plan itself being reviewed annually and republished and signed by the Governor following each gubernatorial election.

The KYEOP may be reviewed and updated when After Action Reports, from either exercises or events identifies changes that are beneficial to the improvement and update of the Plan.

DRAFT DRAFT DRAFT DRAFT DRAFT DRAFT DRAFT

The KYEOP shall be maintained and coordinated by the KyEM Planning Branch, acting on behalf of the Director of KyEM.

Document Control

A physical copy of the KYEOP is maintained at the offices of the KyEM Planning Branch and may be reviewed upon request to the Branch Manager. Physical copies of all Supporting and Incident Specific Plans are also included at this location. The current offices of the Planning Branch are at:

1025 Capital Center Drive
Frankfort, Kentucky 40601
502-607-1760

The KYEOP is also available on-line at <http://KyEM.ky.gov/planning/stateeop.htm>

All revisions to the current KYEOP are listed in the following Record of Revisions and Changes.

DRAFT DRAFT DRAFT DRAFT DRAFT DRAFT DRAFT
Record of Revisions and Changes

REVISION OR CHANGE	DATE

This Page Intentionally Left Blank

DRAFT DRAFT DRAFT DRAFT DRAFT DRAFT DRAFT
EMERGENCY SUPPORT FUNCTION ANNEXES

ESF - 1 Transportation

ESF - 2 Communications and Alerting

ESF - 3 Public Works and Engineering

ESF - 4 Fire Fighting

ESF - 5 Emergency Management

ESF - 6 Mass Care, Emergency Assistance, Housing & Human Services

ESF - 7 Resource Support

ESF - 8 Public Health and Medical Services

ESF - 9 Search and Rescue

ESF - 10 Oil and Hazardous Materials Response

ESF - 11 Agriculture

ESF - 12 Energy

ESF - 13 Public Safety & Security

ESF - 14 Long-Term Community Recovery and Mitigation

ESF - 15 Public Information

DRAFT DRAFT DRAFT DRAFT DRAFT DRAFT DRAFT
SUPPORT PLANS

Commonwealth Behavioral Health Emergency Response Support Plan

State Strategic National Stockpile (SNS) (Under Review CHS)

State CHEMPAC Support Plan (Under Review CHS)

State Mass Fatality Response Plan (Under Development CHS)

Natural Death Surge Plan (Under Development CHS)

Commonwealth Air Operations Plan

Kentucky Drought Response Plan

Commonwealth Energy Assurance Plan

DRAFT DRAFT DRAFT DRAFT DRAFT DRAFT DRAFT
INCIDENT SPECIFIC PLANS

Chemical Stockpile Emergency Preparedness Program (CSEPP) Response Plan
(Under Review)

CSEPP I-75 Diversion Plan 2010

Kentucky Catastrophic Earthquake Plan

Kentucky Pandemic Influenza Preparedness and Response Plan

The Paducah Gaseous Diffusion Incident Response Plan