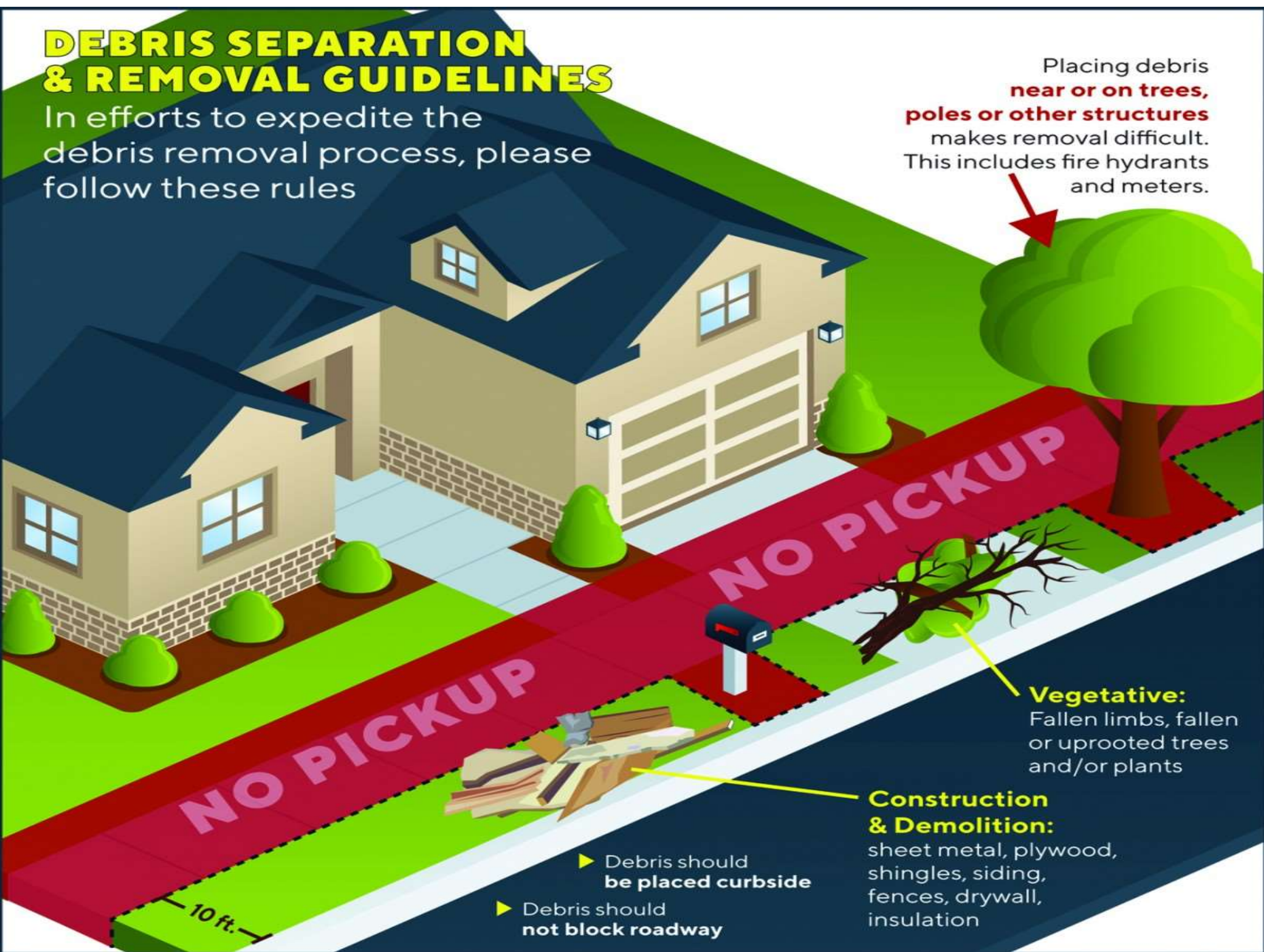


DEBRIS SEPARATION & REMOVAL GUIDELINES

In efforts to expedite the debris removal process, please follow these rules

Placing debris **near or on trees, poles or other structures** makes removal difficult. This includes fire hydrants and meters.



NO PICKUP

NO PICKUP

10 ft.

- ▶ Debris should be placed curbside
- ▶ Debris should not block roadway

Vegetative:
Fallen limbs, fallen or uprooted trees and/or plants

Construction & Demolition:
sheet metal, plywood, shingles, siding, fences, drywall, insulation