



FEMA

www.fema.gov



www.ema.alabama.gov

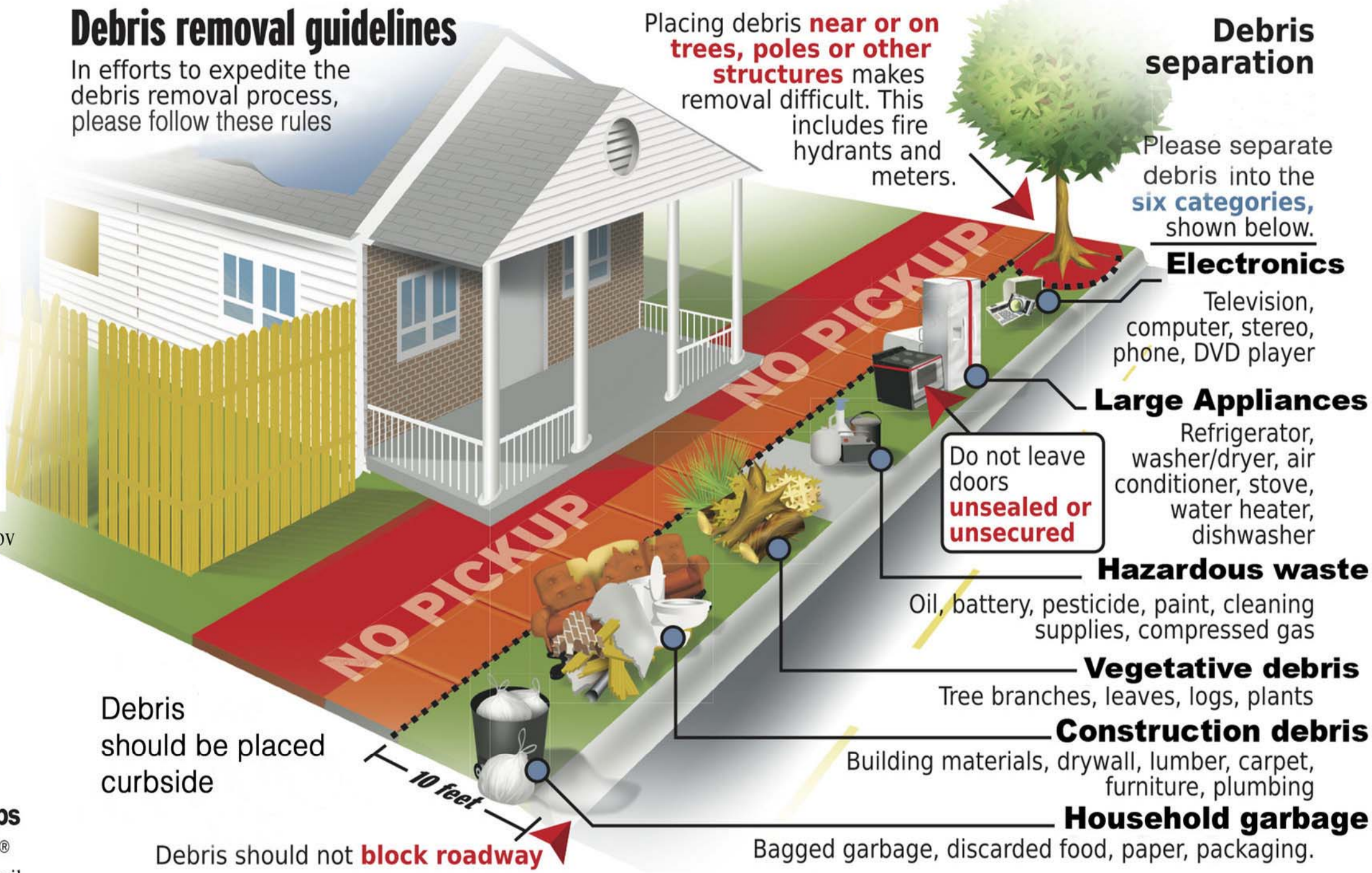


US Army Corps of Engineers®

www.usace.army.mil

# Debris removal guidelines

In efforts to expedite the debris removal process, please follow these rules



Placing debris **near or on trees, poles or other structures** makes removal difficult. This includes fire hydrants and meters.

## Debris separation

Please separate debris into the **six categories**, shown below.

### Electronics

Television, computer, stereo, phone, DVD player

### Large Appliances

Refrigerator, washer/dryer, air conditioner, stove, water heater, dishwasher

Do not leave doors **unsealed or unsecured**

### Hazardous waste

Oil, battery, pesticide, paint, cleaning supplies, compressed gas

### Vegetative debris

Tree branches, leaves, logs, plants

### Construction debris

Building materials, drywall, lumber, carpet, furniture, plumbing

### Household garbage

Bagged garbage, discarded food, paper, packaging.

Debris should be placed curbside

10 feet

Debris should not **block roadway**