

Figure 1. Market Uncertainty

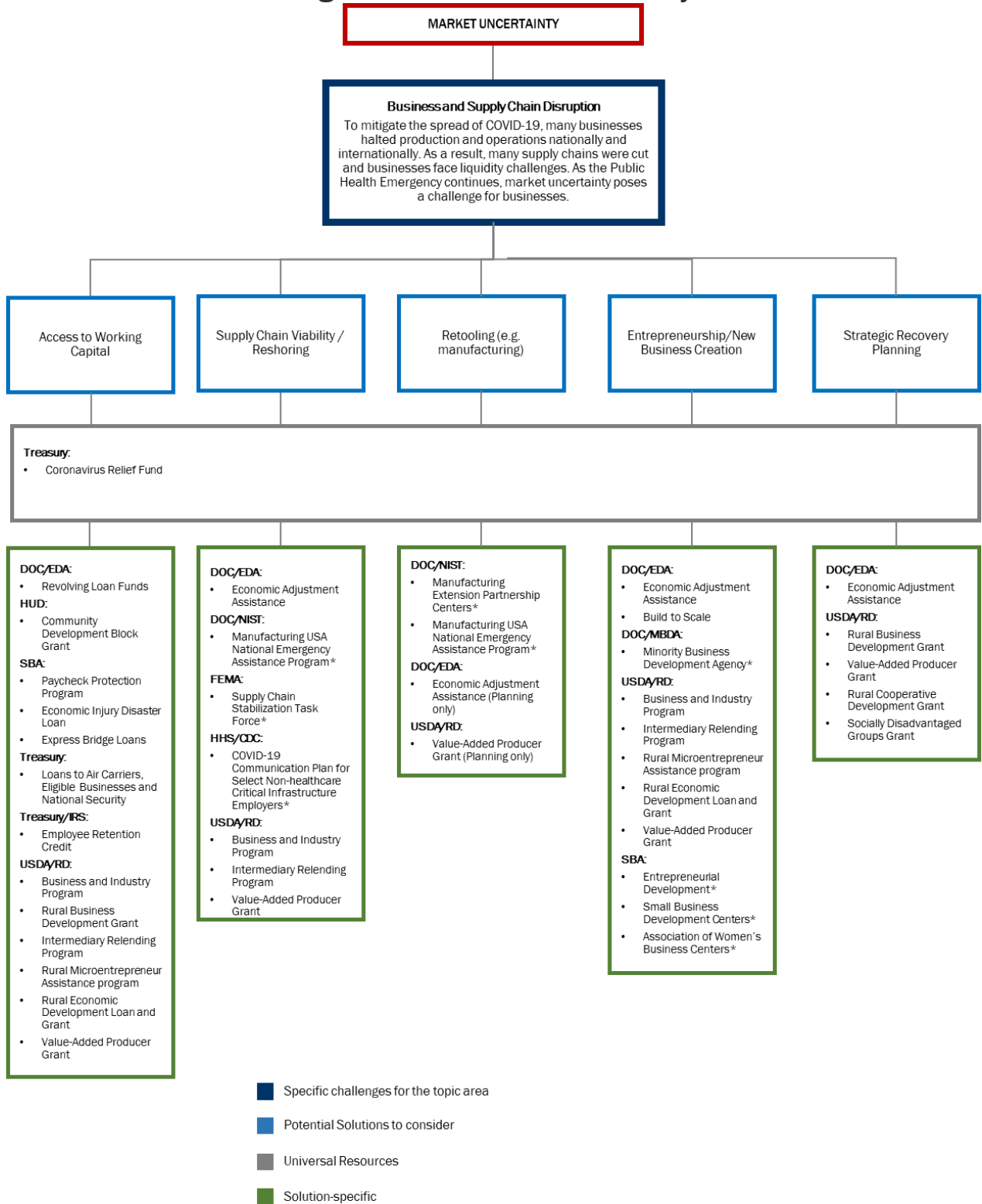


Figure 2. Business Viability

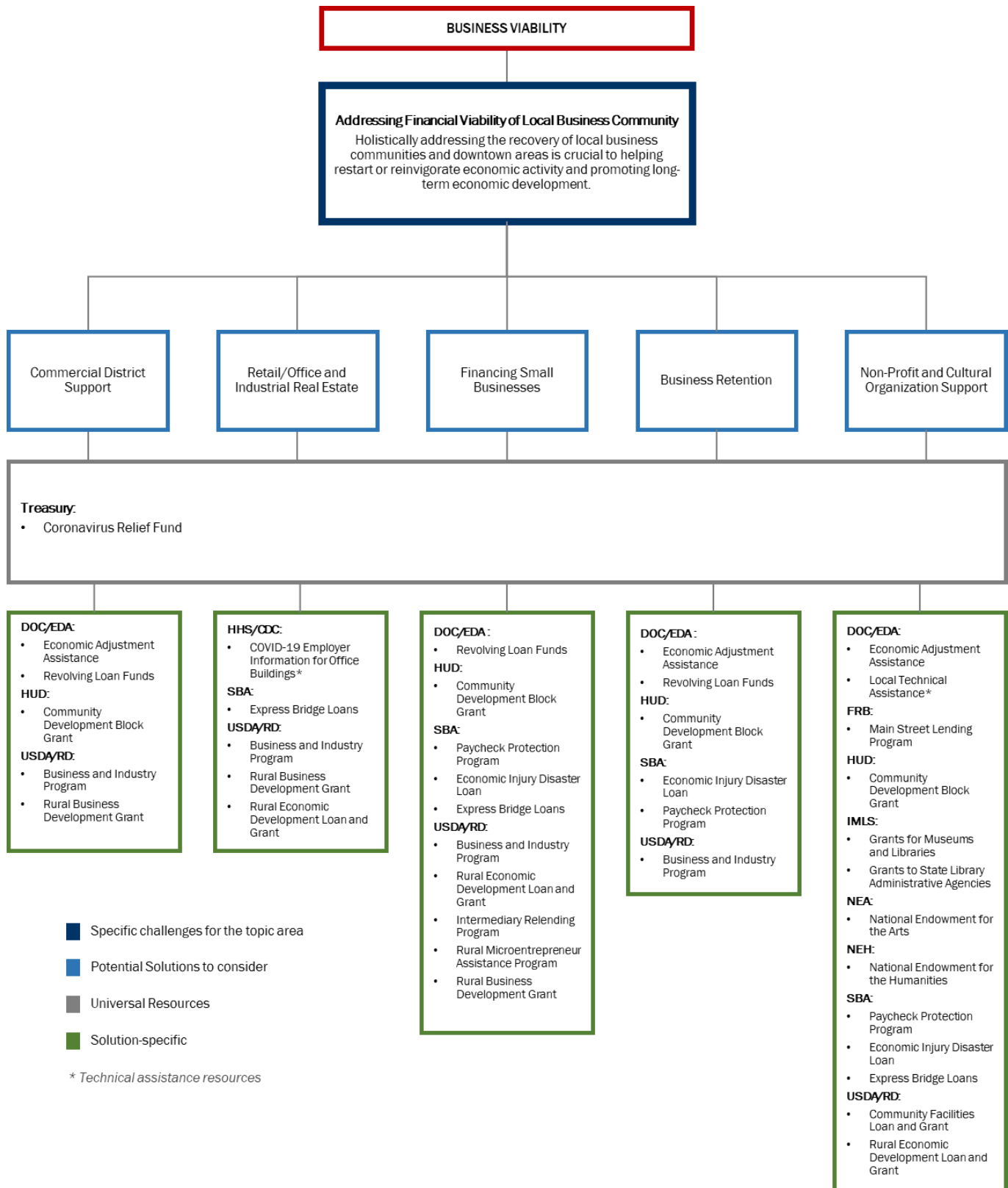
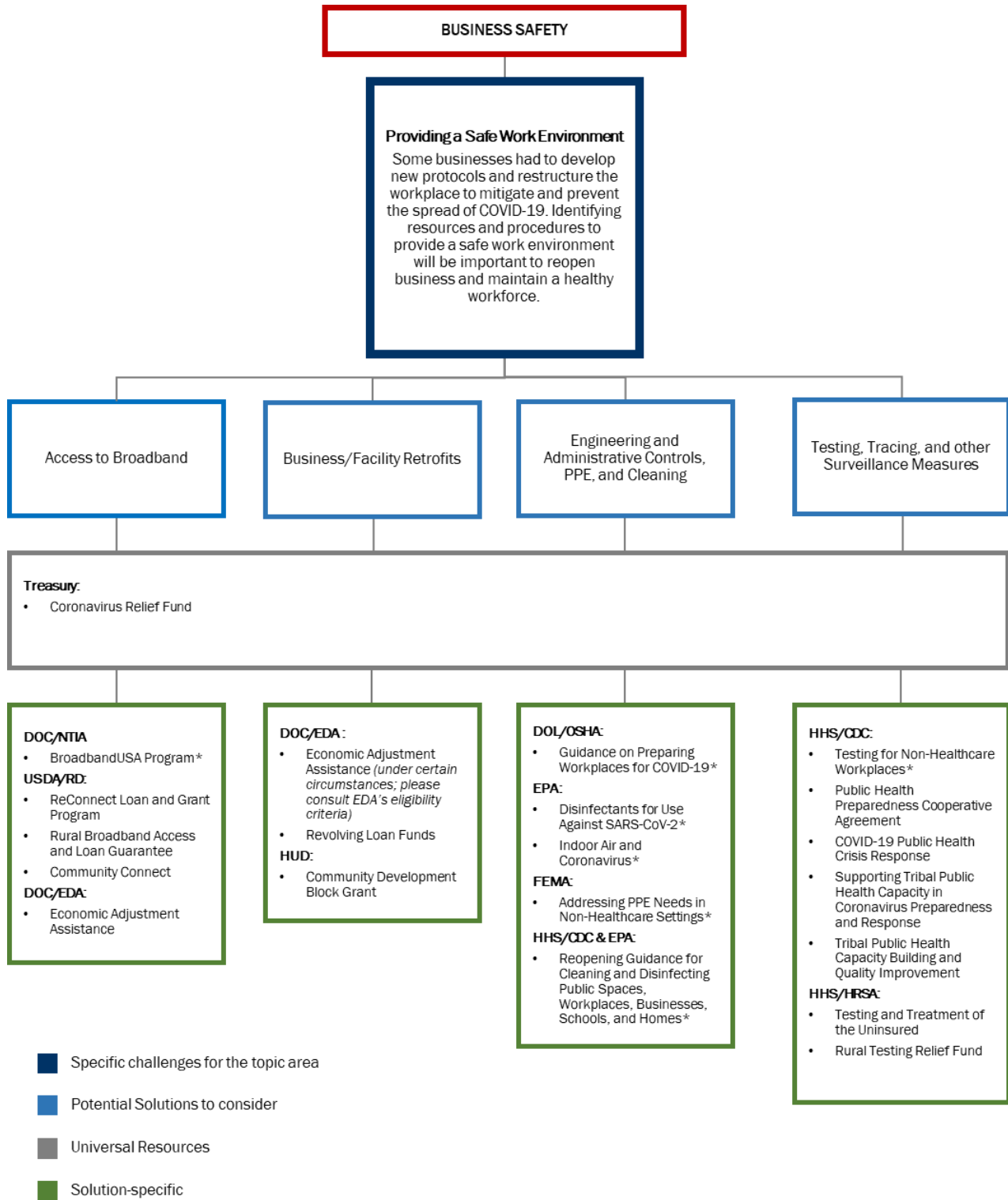


Figure 3. Business Safety



* Technical assistance resources

Figure 4. Workforce Health and Availability

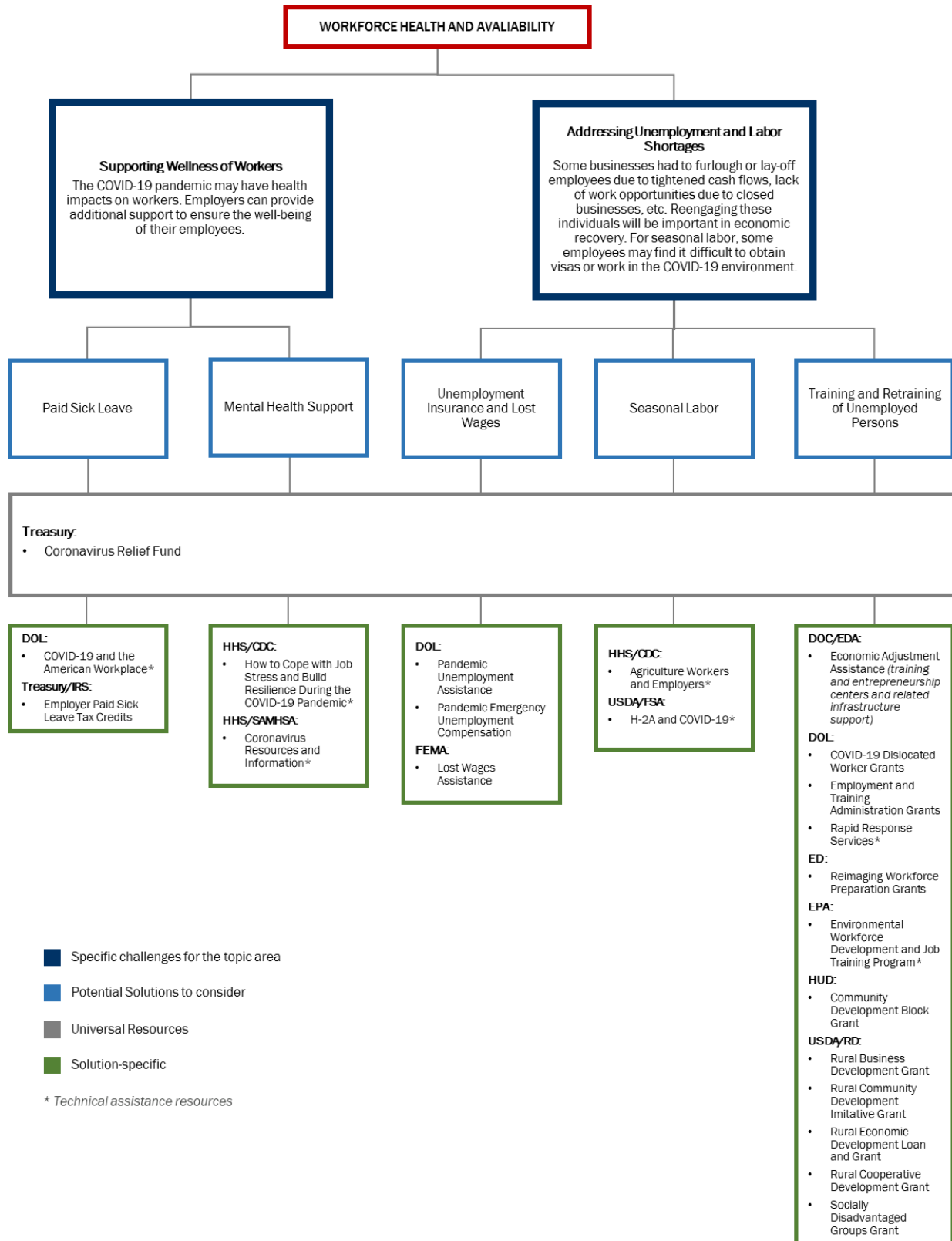
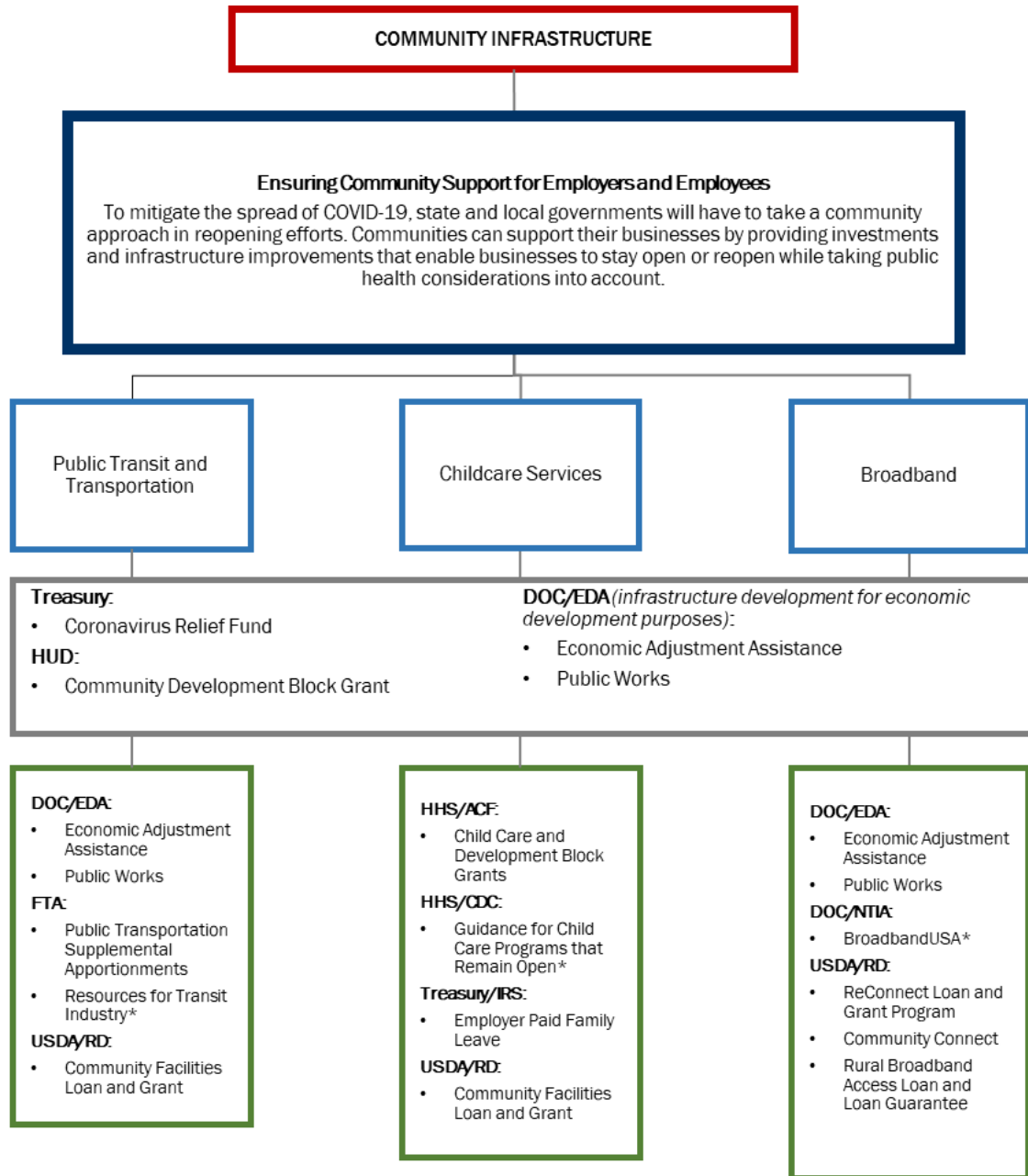


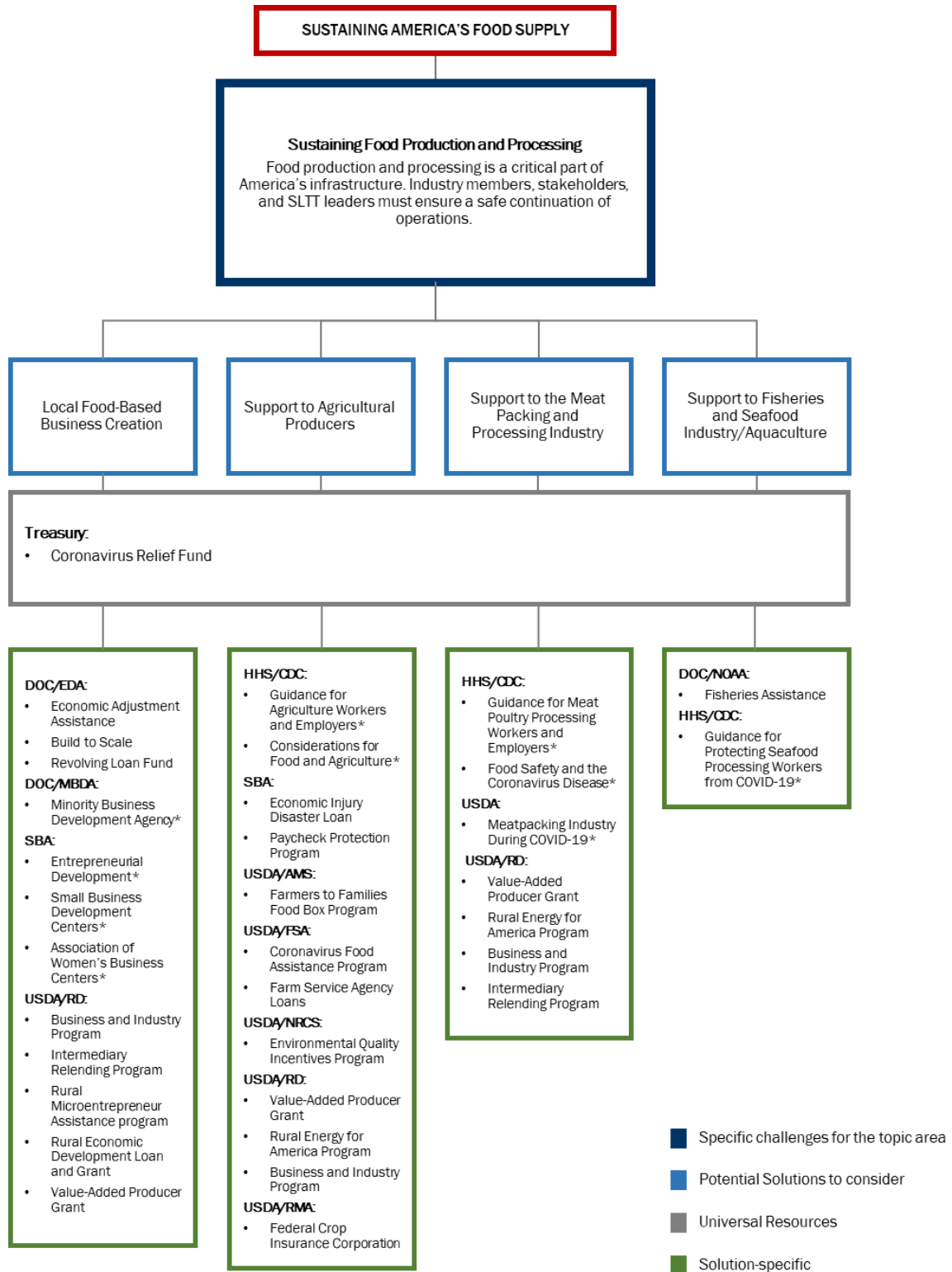
Figure 5. Community Infrastructure



- Specific challenges for the topic area
- Potential Solutions to consider
- Universal Resources
- Solution-specific

* Technical assistance resources

Figure 6. Sustaining America’s Food Supply



Note: For additional information, please also see the [COVID-19 Food and Nutrition Resource Roadmap](#).

Program Index

Program	Program Delivery				Challenges						Additional Information
	Funds to SLTT**	Direct Assistance to For-Profit Businesses	Statutory/Regulatory Flexibility Provided	Funding Allocated as of 7/15/20***	Market Uncertainty	Business Viability	Business Safety	Workforce Health and Availability	Community Infrastructure	Food Supply	Links to Program Websites
Build to Scale (DOC/EDA)	✓			✓		✓				✓	Build to Scale
Business and Industry CARES Act Program (USDA/RD)		✓		✓	✓	✓				✓	Business and Industry CARES Act Program
Child Care and Development Fund (HHS/ACF)				✓					✓		ACF Child Care COVID-19 Resources
Community Connect (USDA/RD)	✓	✓					✓		✓		Community Connect Program
Community Facilities Loan and Grant (USDA/RD)	✓					✓			✓		Community Facilities Loan and Grant
Community Development Block Grant (HUD)	✓		✓	✓	✓	✓	✓	✓			CDBG COVID-19
Coronavirus Food Assistance Program (USDA)		✓	New Program	✓						✓	Coronavirus Food Assistance Program
Coronavirus Relief Fund (Treasury)	✓		New Program	✓	✓	✓	✓	✓	✓	✓	CRF Website: CRF Guidance

*Items that may provide assistance but are not CARES Act funded

**State, Local, Tribal, and Territorial (SLTT) organizations

*** The "Funding Allocated as of 7/15/2020" column demonstrates if CARES Act, supplemental, or annual program funding has been allocated (fully or partially).

COVID-19 Economic Recovery Resource Roadmap

Program	Program Delivery				Challenges						Additional Information
	Funds to SLTT**	Direct Assistance to For-Profit Businesses	Statutory/Regulatory Flexibility Provided	Funding Allocated as of 7/15/20***	Market Uncertainty	Business Viability	Business Safety	Workforce Health and Availability	Community Infrastructure	Food Supply	Links to Program Websites
COVID-19 Dislocated Worker Grants (DOL)	✓			✓				✓			COVID-19 Dislocated Workers
COVID-19 Public Health Crisis Response (HHS/CDC)	✓			✓			✓				COVID-19 Public Health Crisis Response COVID-19 Funding
Economic Adjustment Assistance (DOC/EDA)	✓		✓	✓	✓	✓	✓	✓	✓	✓	EDA COVID-19
Economic Injury Disaster Loan (SBA)		✓		✓	✓	✓					EIDL COVID-19 Website: SBA COVID-19 Programs
Employee Retention Credit (Treasury/IRS)		✓			✓						Employee Retention Credit
Employer Paid Family Leave Tax Credits (Treasury/IRS)		✓		✓			✓		✓		Employer Paid Family Leave Tax Credit
Employer Paid Sick Leave Tax Credits (Treasury/IRS)		✓									Employer Paid Sick Leave Tax Credits
Employment and Training Administration Grants (DOL)*		✓		✓				✓			Employment and Training Administration

*Items that may provide assistance but are not CARES Act funded

**State, Local, Tribal, and Territorial (SLTT) organizations

*** The “Funding Allocated as of 7/15/2020” column demonstrates if CARES Act, supplemental, or annual program funding has been allocated (fully or partially).

COVID-19 Economic Recovery Resource Roadmap

Program	Program Delivery				Challenges						Additional Information
	Funds to SLTT**	Direct Assistance to For-Profit Businesses	Statutory/Regulatory Flexibility Provided	Funding Allocated as of 7/15/20***	Market Uncertainty	Business Viability	Business Safety	Workforce Health and Availability	Community Infrastructure	Food Supply	Links to Program Websites
<i>Environmental Quality Incentive Program (USDA/NRCS)*</i>		✓		✓						✓	Environmental Quality Incentives Program
<i>Express Bridge Loans (SBA)*</i>		✓		✓	✓	✓					Express Bridge Loans
<i>Farm Service Agency Loans (USDA/FSA)*</i>		✓								✓	FSA Farm Loan Programs
<i>Farmers to Families Food Box Program (USDA/AMS)</i>		✓	New Program	✓						✓	Farmers to Families Food Box Program
<i>Federal Crop Insurance Corporation (USDA/RMA)*</i>		✓		✓						✓	RMA Federal Crop Insurance Corporation Website ; RMA COVID-19 FAQs
<i>Fisheries Assistance (DOC/NOAA)</i>		✓								✓	NOAA Fisheries Coronavirus Update
<i>Grants for Museum and Libraries (IMLS)</i>		✓		✓		✓					IMLS CARES Act Grants
<i>Grants to State Library Administrative Agencies (IMLS)</i>	✓			✓		✓					IMLS State Library Funding CARES Act
<i>Intermediary Relending Program (USDA/RD)</i>	✓				✓	✓				✓	Intermediary Relending Program

*Items that may provide assistance but are not CARES Act funded

**State, Local, Tribal, and Territorial (SLTT) organizations

*** The “Funding Allocated as of 7/15/2020” column demonstrates if CARES Act, supplemental, or annual program funding has been allocated (fully or partially).

COVID-19 Economic Recovery Resource Roadmap

Program	Program Delivery				Challenges						Additional Information
	Funds to SLTT**	Direct Assistance to For-Profit Businesses	Statutory/Regulatory Flexibility Provided	Funding Allocated as of 7/15/20***	Market Uncertainty	Business Viability	Business Safety	Workforce Health and Availability	Community Infrastructure	Food Supply	Links to Program Websites
Loans to Air Carriers, Eligible Businesses, and National Security (Treasury)		✓			✓						Loans to Air Carriers, Eligible Businesses, and National Security Businesses
Lost Wages Assistance (FEMA)	✓			✓				✓			Lost Wages Supplemental Payment Assistance Guidelines
Main Street Lending Program (FRB)		✓				✓					Main Street Lending Program
National Endowment for the Arts CARES Act (NEA)			✓	✓		✓					National Endowment for the Arts CARES Act Supplement
National Endowment for the Humanities CARES Act (NEH)			✓	✓		✓					National Endowment for the Humanities COVID-19 Update
Pandemic Emergency Unemployment Compensation (DOL)	✓			✓				✓			Unemployment Insurance Relief During COVID-19 Outbreak
Pandemic Unemployment Assistance (DOL)	✓			✓				✓			Unemployment Insurance Relief During COVID-19 Outbreak
Paycheck Protection Program (PPP) (SBA)		✓	New Program	✓	✓	✓					PPP Website: SBA COVID-19 Programs

*Items that may provide assistance but are not CARES Act funded

**State, Local, Tribal, and Territorial (SLTT) organizations

*** The “Funding Allocated as of 7/15/2020” column demonstrates if CARES Act, supplemental, or annual program funding has been allocated (fully or partially).

COVID-19 Economic Recovery Resource Roadmap

Program	Program Delivery				Challenges						Additional Information
	Funds to SLTT**	Direct Assistance to For-Profit Businesses	Statutory/Regulatory Flexibility Provided	Funding Allocated as of 7/15/20***	Market Uncertainty	Business Viability	Business Safety	Workforce Health and Availability	Community Infrastructure	Food Supply	Links to Program Websites
Public Works (DOC/EDA)	✓			✓					✓		Public Works Program
ReConnect Loan and Grant Program (USDA/RD)	✓	✓					✓				ReConnect Loan and Grant Program
Reimaging Workforce Preparation Grants (ED)		✓		✓				✓			Education Stabilization Fund Discretionary Grants
Revolving Loan Funds (DOC/EDA)*	✓				✓	✓					Revolving Loan Fund Program
Rural Broadband Access and Loan Guarantee (USDA/RD)*	✓	✓					✓		✓		Rural Broadband Access Loan and Loan Guarantee Program
Rural Business Development Grant (USDA/RD)*	✓				✓	✓		✓			Rural Business Development Grant
Rural Community Development Initiative Grant (USDA/RD)*						✓		✓			Rural Community Development Initiative Grant
Rural Cooperative Development Grant (USDA/RD)*					✓			✓			Rural Cooperative Development Grant Program
Rural Economic Development Loan and Grant (USDA/RD)*					✓	✓		✓		✓	Rural Economic Development Loan and Grant Program

*Items that may provide assistance but are not CARES Act funded

**State, Local, Tribal, and Territorial (SLTT) organizations

*** The “Funding Allocated as of 7/15/2020” column demonstrates if CARES Act, supplemental, or annual program funding has been allocated (fully or partially).

COVID-19 Economic Recovery Resource Roadmap

Program	Program Delivery				Challenges						Additional Information
	Funds to SLTT**	Direct Assistance to For-Profit Businesses	Statutory/Regulatory Flexibility Provided	Funding Allocated as of 7/15/20***	Market Uncertainty	Business Viability	Business Safety	Workforce Health and Availability	Community Infrastructure	Food Supply	Links to Program Websites
<i>Rural Energy for America Program (USDA/RD)*</i>		✓								✓	Rural Energy for America Program
Rural Testing Relief Fund (HHS/HRSA)	✓			✓			✓				Rural Testing Relief Fund Allocations
Socially Disadvantaged Groups Grant (USDA/RD)					✓			✓			Socially Disadvantaged Groups Grant Program
Supporting Tribal Public Health Capacity in Coronavirus Preparedness and Response (CDC)	✓						✓				Supporting Tribal Public Health Capacity Grant Opportunity
Testing and Treatment of the Uninsured (HHS/HRSA)	✓						✓				COVID-19 Uninsured Claim
<i>Tribal Public Health Capacity Building and Quality Improvement (CHHS/DC)*</i>	✓						✓				Tribal Public Health Capacity Building and Quality Improvement
Value Added Producer Grant (USDA/RD)		✓			✓					✓	Value Added Producer Grant

*Items that may provide assistance but are not CARES Act funded

**State, Local, Tribal, and Territorial (SLTT) organizations

*** The “Funding Allocated as of 7/15/2020” column demonstrates if CARES Act, supplemental, or annual program funding has been allocated (fully or partially).

Additional Resources

Market Uncertainty

The COVID-19 pandemic causes many businesses to stop or slow production or business operations. As a result, many supply chains were broken. The [Supply Chain Stabilization Task Force](#) provides information and strategies to preserve supply chains during the COVID-19 pandemic.

To support businesses resuming operations, there are a handful of technical assistance centers that provide education, training, small business advisory in their COVID-19 recovery and resiliency efforts:

- [SBA Office of Entrepreneurial Development Resources](#)
- [SBA Entrepreneurial Development Programs CARES Act](#)
- [Small Business Development Centers](#)
- [Minority Business Development Agency Centers](#)
- [Association of Women's Business Centers](#)

Manufacturing specific technical assistance is also provided through:

- [Manufacturing Extension Partnership](#)
- [Manufacturing USA National Emergency Assistance Program](#)

In developing communication plans among organizations, especially in non-healthcare critical infrastructures, the Centers for Disease Control (CDC) provides [guidance](#).

Business Viability

Business interruption and shutdowns as well as change in consumer demand has impacted business viability in many sectors. To support economic recovery, EDA offers [Local Technical Assistance](#) to help promote economic development and alleviate unemployment, underemployment, and outmigration in distressed regions.

Business Safety

[OSHA Website](#)

In reopening efforts, businesses and employers can consider [reopening guidance for cleaning and disinfecting](#), [Guidance on Preparing Workplaces for COVID-19](#) and [Testing for Non-Healthcare Workplaces](#). In mitigating the spread of SARS-CoV-2 in the workplace, disinfecting measures should be done using [Disinfectants for Use Against SARS-CoV-2](#). Information on COVID-19 related to [indoor air environments](#) should also be considered.

Workforce Health and Availability

[Rapid Response Services](#) provides resources for both employers and employees in re-employment opportunities for those recently laid off or furloughed. Additionally, EPA offers [trainings](#) to prepare unemployed and underemployed residents of waste-impacted communities for full-time environmental careers.

[Guidance](#) is available to help employers protect the health and mitigate the spread of COVID-19 mitigation in the agriculture industry.

To address mental health challenges, the Centers for Disease Control provides information on [coping with job stress](#) and build resilience during the COVID-19 Pandemic. Other [mental health information](#) regarding coronavirus is available through Substance Abuse and Mental Health Services Administration (SAMSHA).

For employees rights regarding paid COVID-19 related leave, the temporary rule and information is available through the Department of Labor's [COVID-19 and the American Workplace](#) guidance.

For seasonal agricultural workers needed visas, information on [H2-A visas](#) and subsequent impacts of COVID-19 are available.

Community Infrastructure

In resuming businesses and reopening communities, public transit operations should consider [available resources](#) for safe operations. Commercial office space can take the [outlined steps](#) to ensure a safe and healthy workplace for workers and clients. Additionally, child care centers remaining open can review [guidance](#) for safe operations. Community revitalization efforts can also be supported by the Environmental Protection Agency's [Smart Growth strategies](#) and technical assistance.

The National Endowment of the Arts provides a list of organizations that offer [resources and support services for artists and arts and cultural organizations](#).

NTIA's [BroadbandUSA](#) program includes "one-stop" information on State broadband efforts, [federal funding](#), [technical assistance](#), and [broadband-related publications](#). Communities may request technical assistance, and are also encouraged to consult the [State Broadband Leaders Network](#) map for contact information for their State.

Sustaining America's Food Supply

FDA offers [Considerations for Food and Agriculture](#) on prioritization of personal protective equipment, cloth face coverings, disinfectants, and sanitation supplies during the COVID-19 pandemic in the food and agricultural industry.

The Centers for Disease Control (CDC) has prepared extensive [Guidance for Workplaces](#) on worker safety to prevent the spread of COVID-19 in the workplace, including [guidance](#) to Agricultural Workers and Employers. For meat and poultry processing facilities, industry-specific [Guidance for Meat and Poultry Processing Workers and Employers](#) is available on workplace safety in the COVID-

19 environment. Given the increased attention to meatpacking industry as related to high outbreaks of COVID-19, the USDA has also released an [overview](#) on the Meatpacking Industry in Rural America During the COVID-19 Pandemic. Likewise, information for [Seafood Processing Workers](#) is available with considerations for both onshore plants and offshore vessels to mitigate and plan for exposures to COVID-19.

For additional information, please see the [COVID-19 Food and Nutrition Resource Roadmap](#).

Acronym List

ACF	Administration of Children and Families
ACL	Administration for Community Living
AMS	Agricultural Marketing Service
CARES	Coronavirus Aid, Relief, and Economic Security
CDBG	Community Development Block Grants
CDC	Centers for Disease Control and Prevention
CFAP	Coronavirus Food Assistance Program
COVID-19	Coronavirus
CRF	Coronavirus Relief Fund
CSBG	Community Services Block Grant
DOC	U.S. Department of Commerce
DOL	U.S. Department of Labor
ED	U.S. Department of Education
EDA	Economic Development Administration
EIDL	Economic Injury Disaster Loan
EPA	U.S. Environmental Protection Agency
ESG	Emergency Solutions Grants
FAQ(s)	Frequently Asked Questions
FCC	Federal Communications Commission
FDA	U.S. Food and Drug Administration
FEMA	Federal Emergency Management Agency
FNS	Food and Nutrition Service
FSA	Farm Service Agency
HHS	U.S. Department of Health and Human Services
HRSA	Health Resources and Services Administration
HUD	U.S. Department of Housing and Urban Development
IMLS	Institute of Museum and Library Services
IRS	Internal Revenue Service

COVID-19 Economic Recovery Resource Roadmap

NEA	National Endowment for the Arts
NEH	National Endowment for the Humanities
NOAA	National Oceanic and Atmospheric Administration
NRCS	Natural Resources Conservation Service
NTIA	National Telecommunications and Information Administration
OSHA	Occupational Safety and Health Administration
PA	Public Assistance
PHE	Public Health Emergency
PPP	Paycheck Protection Program
RD	Rural Development
RMA	Risk Management Agency
SBA	U.S. Small Business Administration
SLTT	State, Local, Tribal, and Territorial
Treasury	U.S. Department of the Treasury
USDA	U.S. Department of Agriculture